

S
— | — PORTFOLIO
N

HELLO,

I am Shea Neil, and I am an Interior designer from the American University in Dubai.

I specialize in ICD i.e. Integrated Computational Design, and Hospitality. This is my design portfolio.

Enjoy !

CONTENTS

1

2

3

4

5

6

7

8

9

Commercial
Design

Software
Design

Retail
Design

Bath
Design

Kitchen
Design

Food & Beverage
Design

Furniture
Design

Residential
Design

Software
Design

-

-

-

-

-

-

-

-

-

Sallivus

Tel Aviv
Arcades

Pleats
Please

Ember

Siemens
Kitchenette

Mikussu

Land of
Settlers

Abendrot

House
N

Page 1

Page 5

Page 9

Page 14

Page 17

Page 20

Page 25

Page 28

Page 31

1



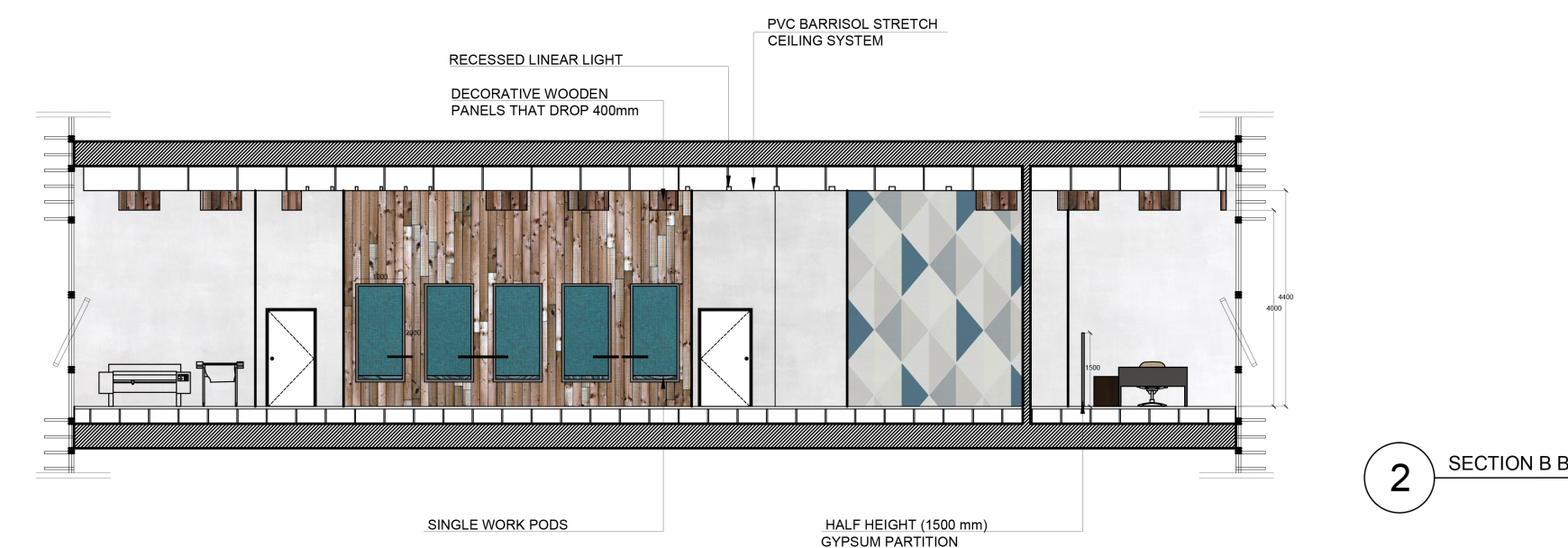
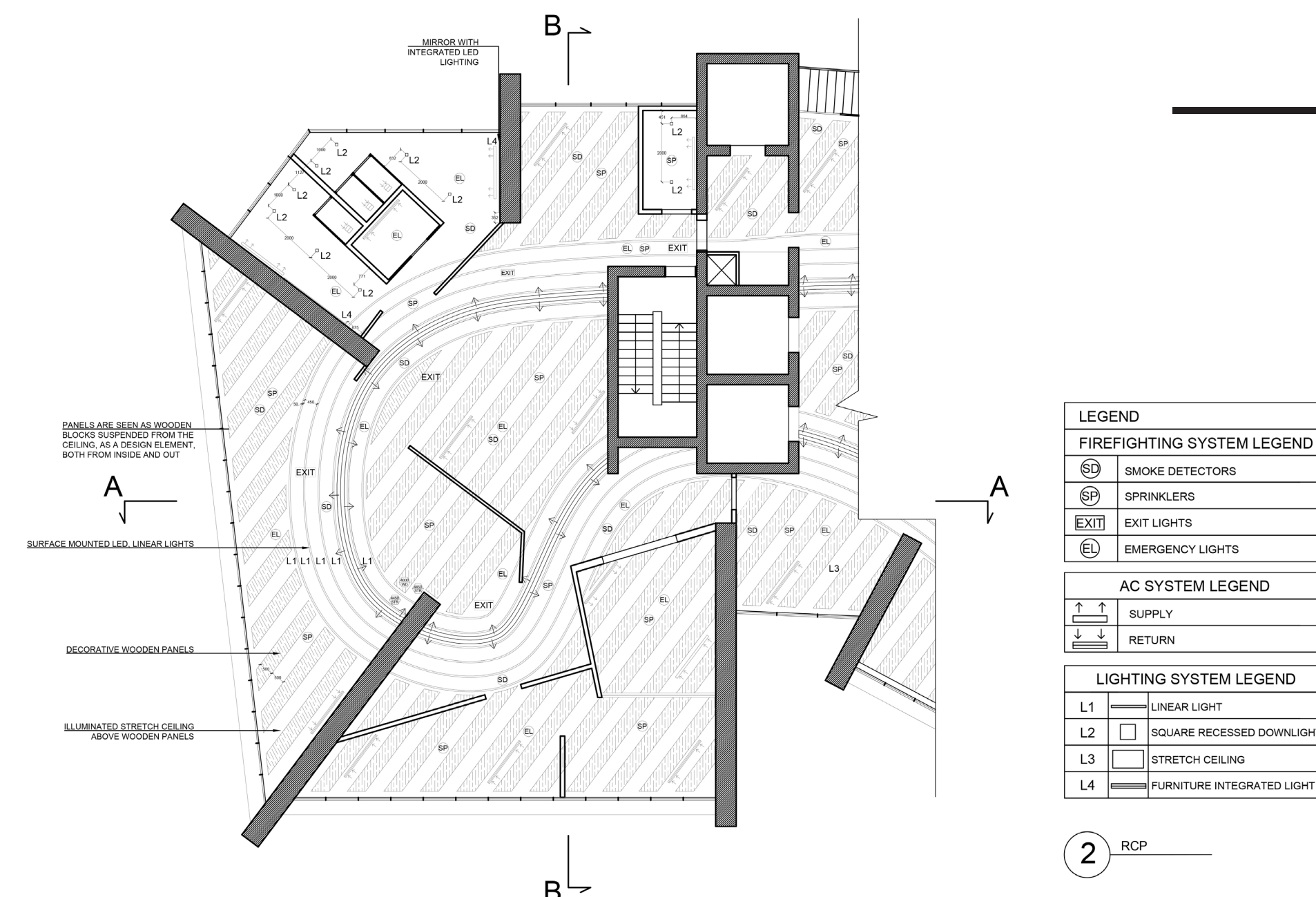
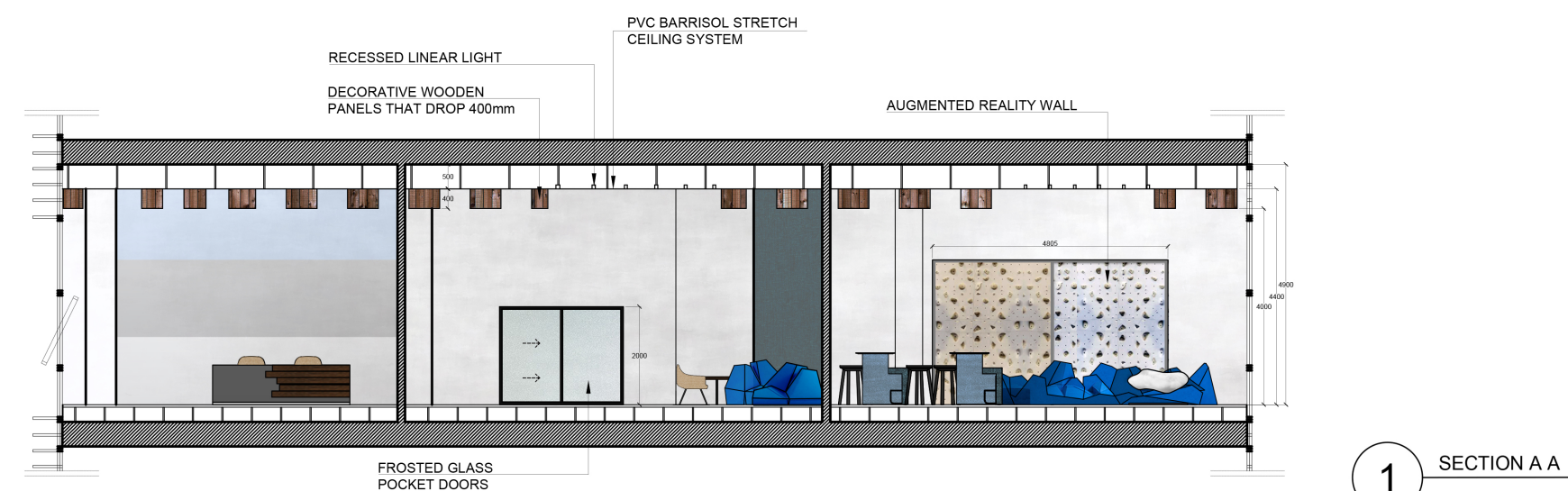
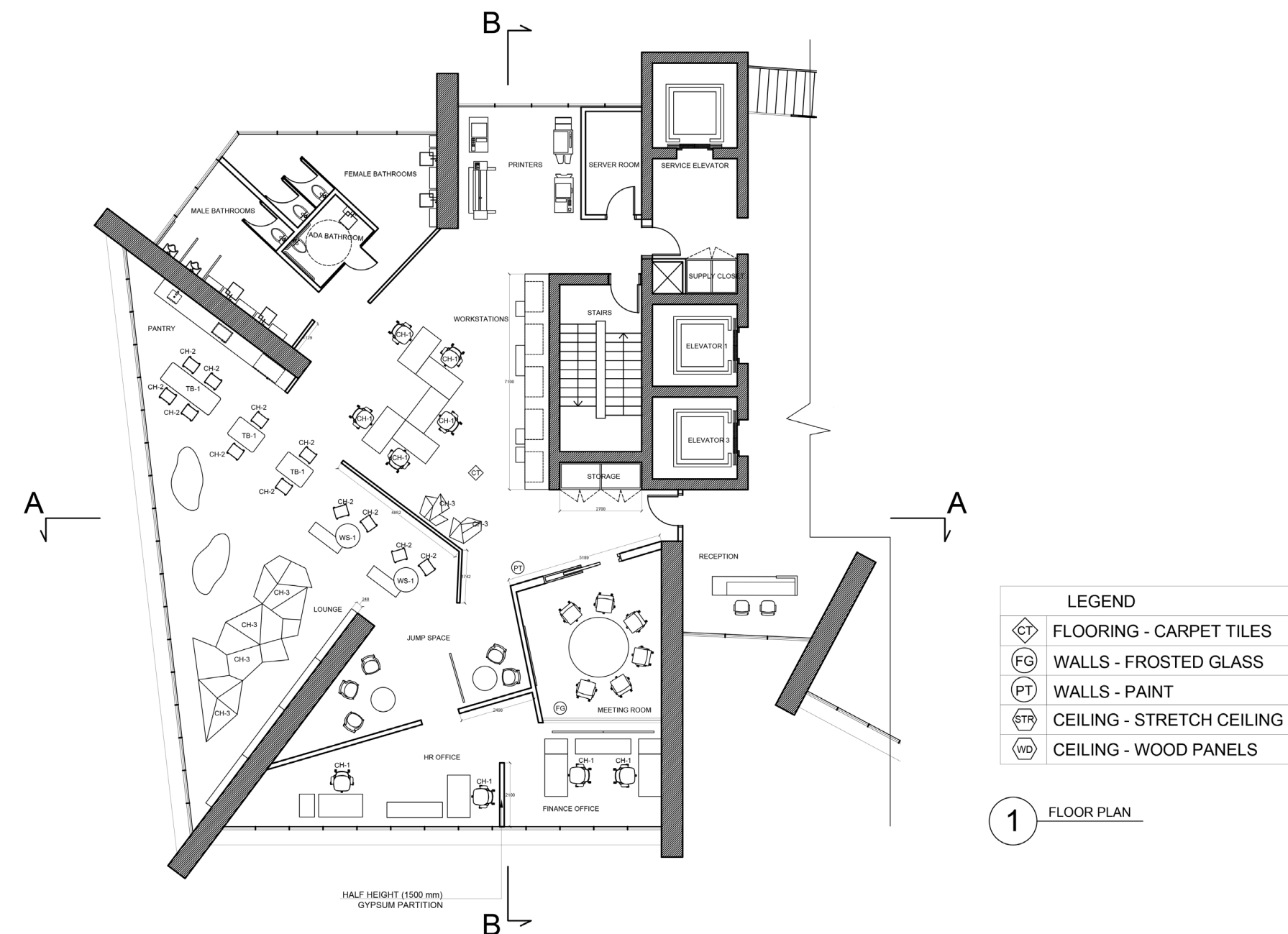
SALLIVUS

This project revolves around creating a co-working, futuristic office space. The initial idea and concept were derived from the country of Estonia.

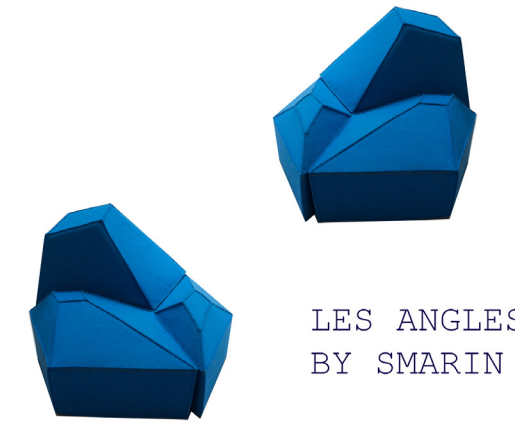
Named Sallivus, it is an office space that is designed keeping in mind the concept of angles and abstraction. The inspiration for this project is drawn from the Baltic country of Estonia.

Hence, the color scheme shows a lot of blues, black and Grey shades (colors of the flag) and a leaning towards diagonals and other linear elements.

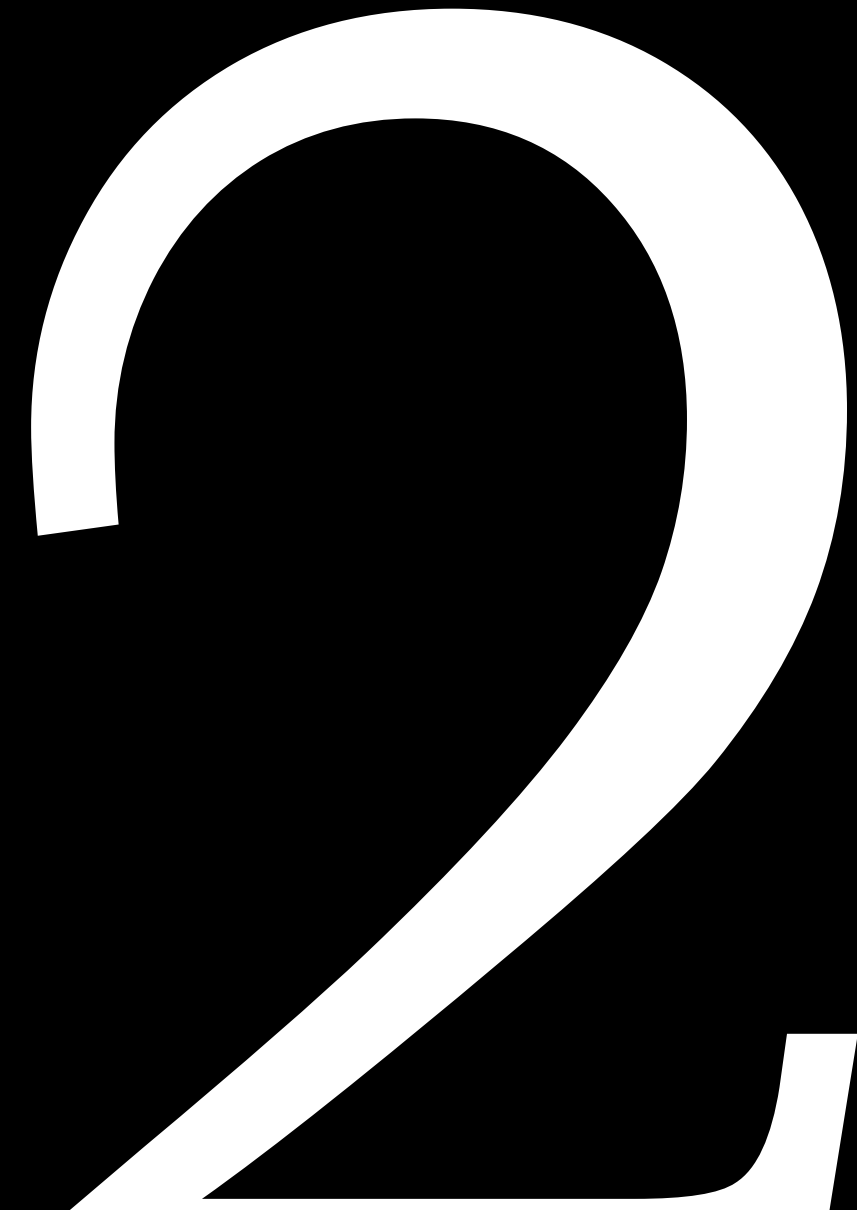
The only break in linearity is seen in the RCP, where a sinuous curve that acts as a linear lighting element cuts through. This gives the space a sense of dynamism and contrasts well with the floor plan.



Furniture Selection



Renders



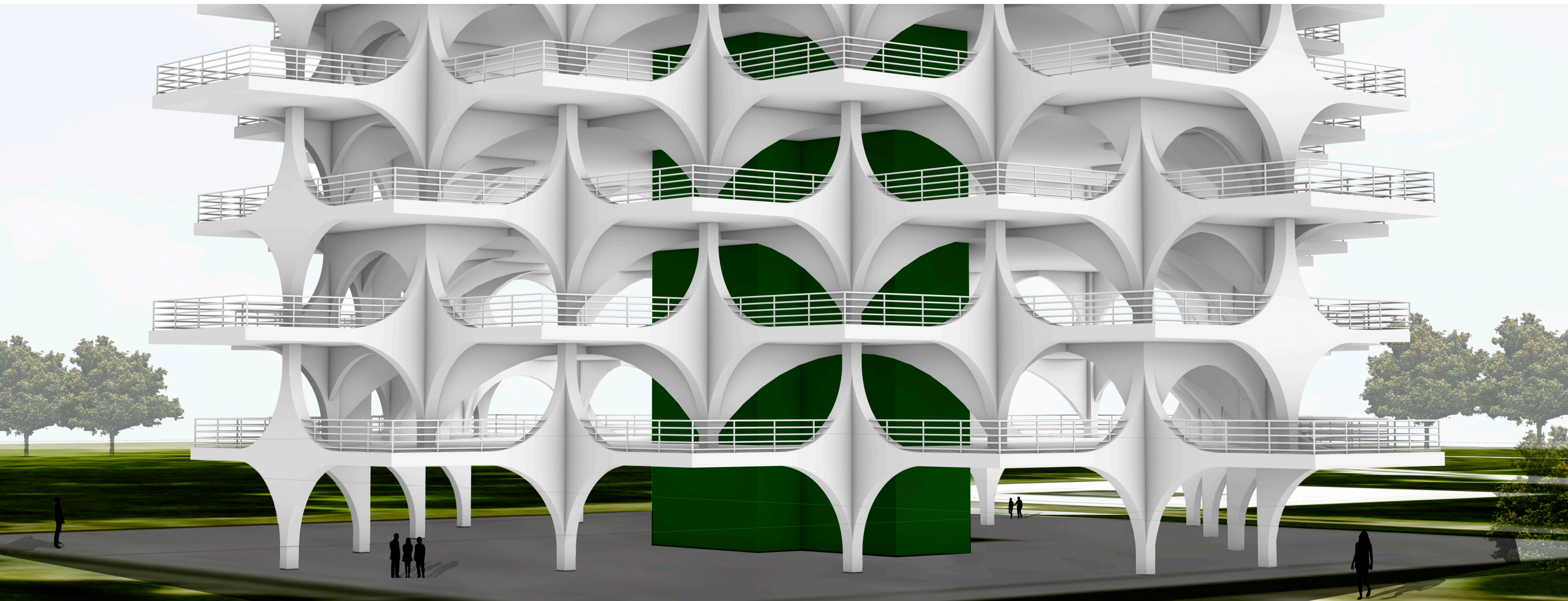
TEL AVIV ARCADES

The Tel Aviv Arcades is a building designed by Penda, located in Israel. It was inspired by the Bauhaus movement, reflecting its design and materials.

This project was to replicate a building on Rhinoceros, a Modeling software, as accurately as possible, while giving it a pop of color that would represent its character. Here, green is used to show a hint of nature, which was important, as the building site was surrounded by trees.

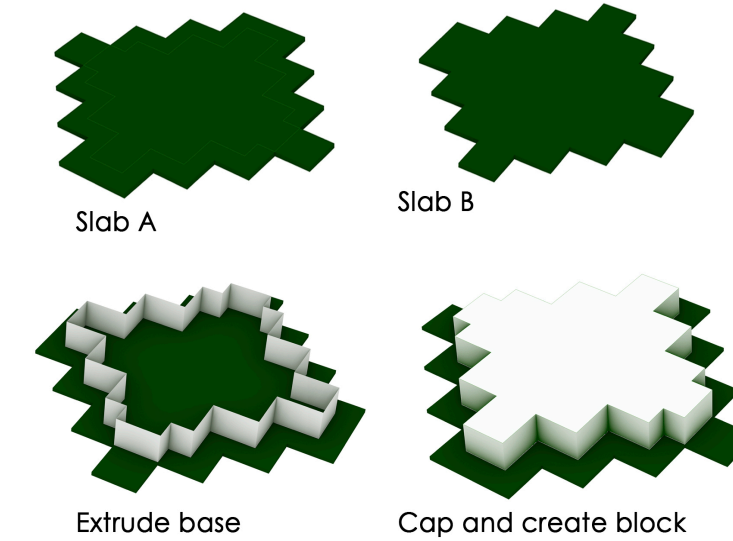
Project Overview -

Project: Tel Aviv Arcades
Location: Tel Aviv, Israel
Architect: Penda Austria
Size: 21000 sq m
Floors: 33
Year: 2019
Style: Bauhaus

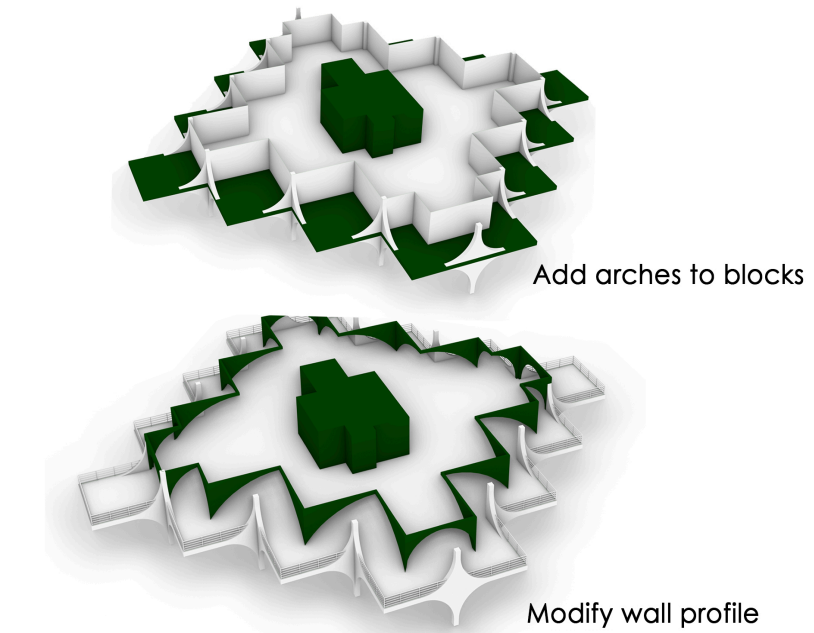


DIAGRAMS

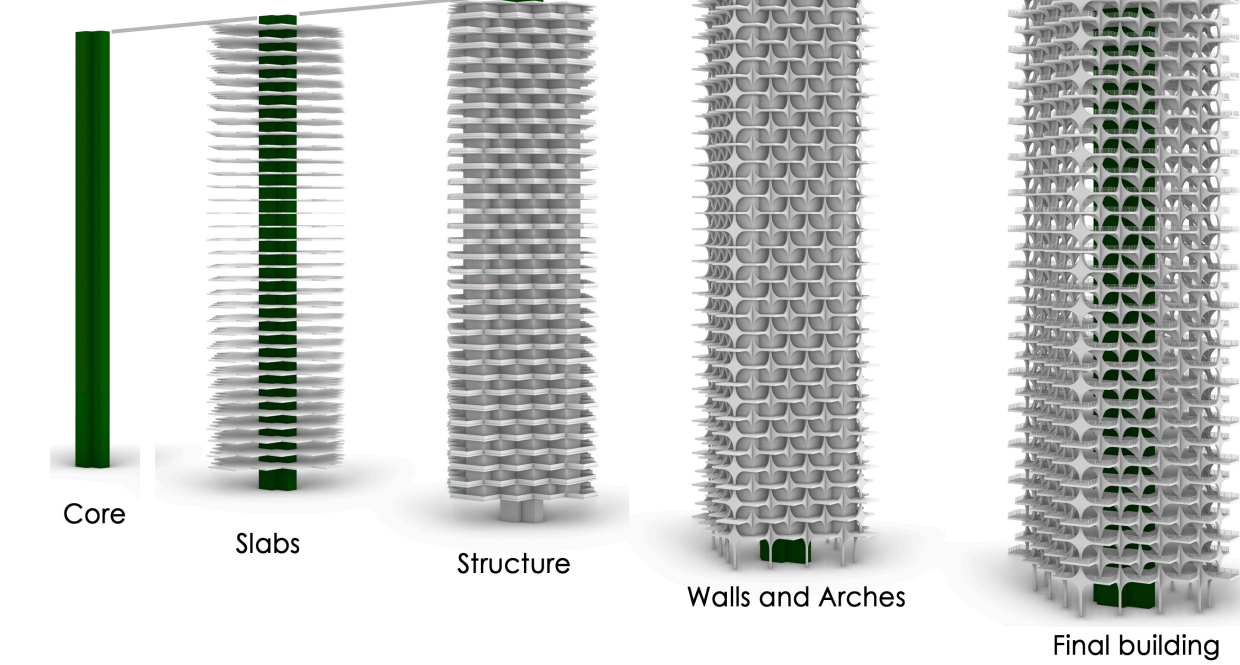
Building Operations



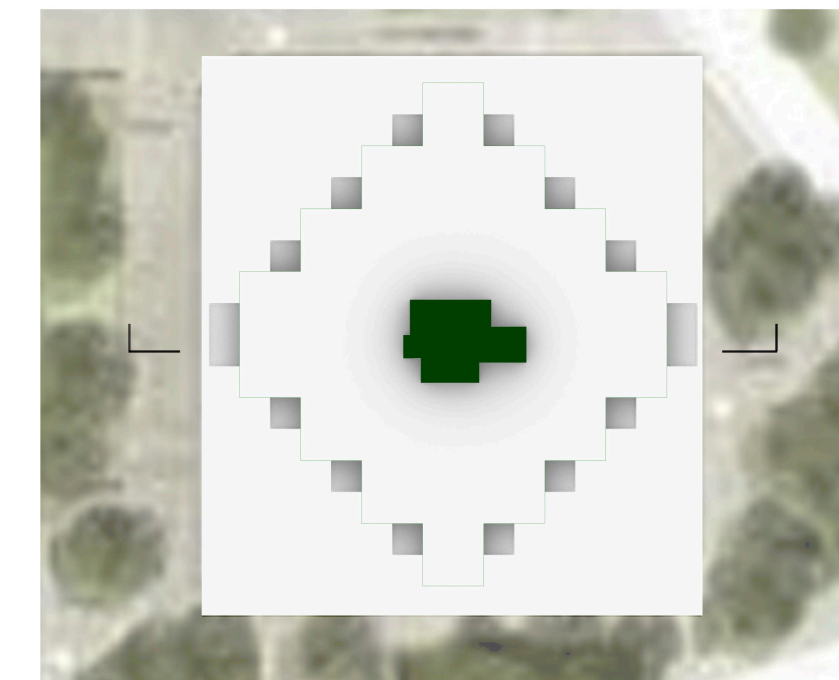
Building Geometries Generation



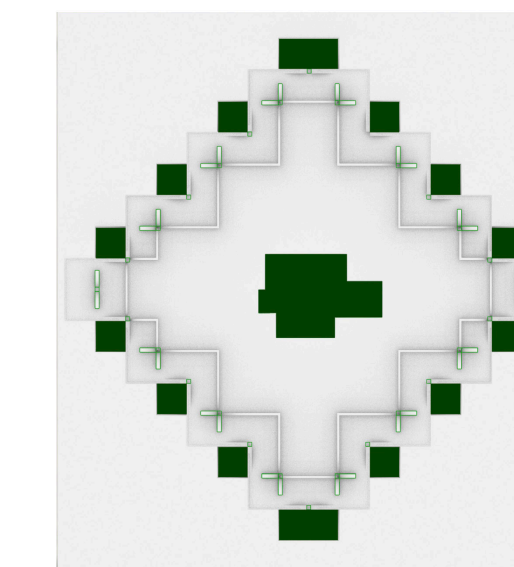
Building Parts



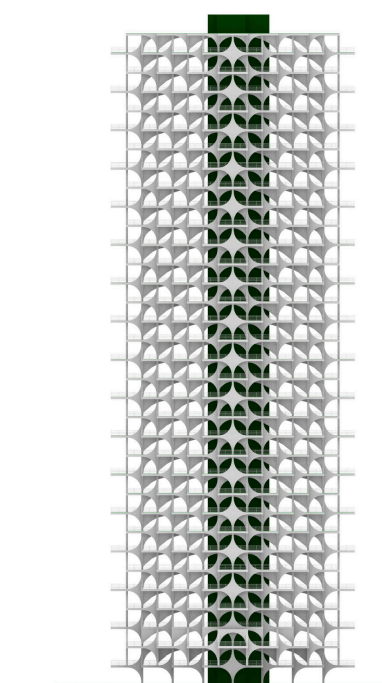
VIEWS - Top View · 2 Elevations · 2 Sections



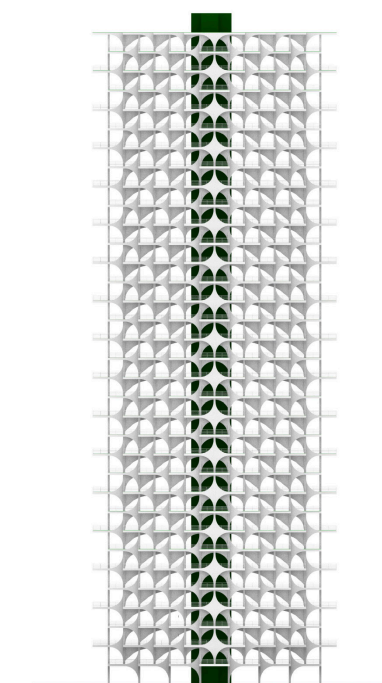
Top View



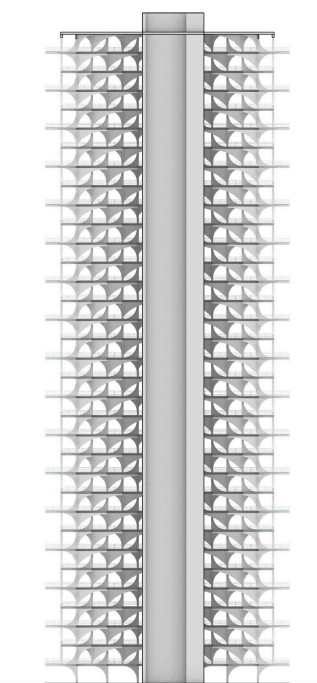
Section AA



Front Elevation



Right Elevation



Section BB

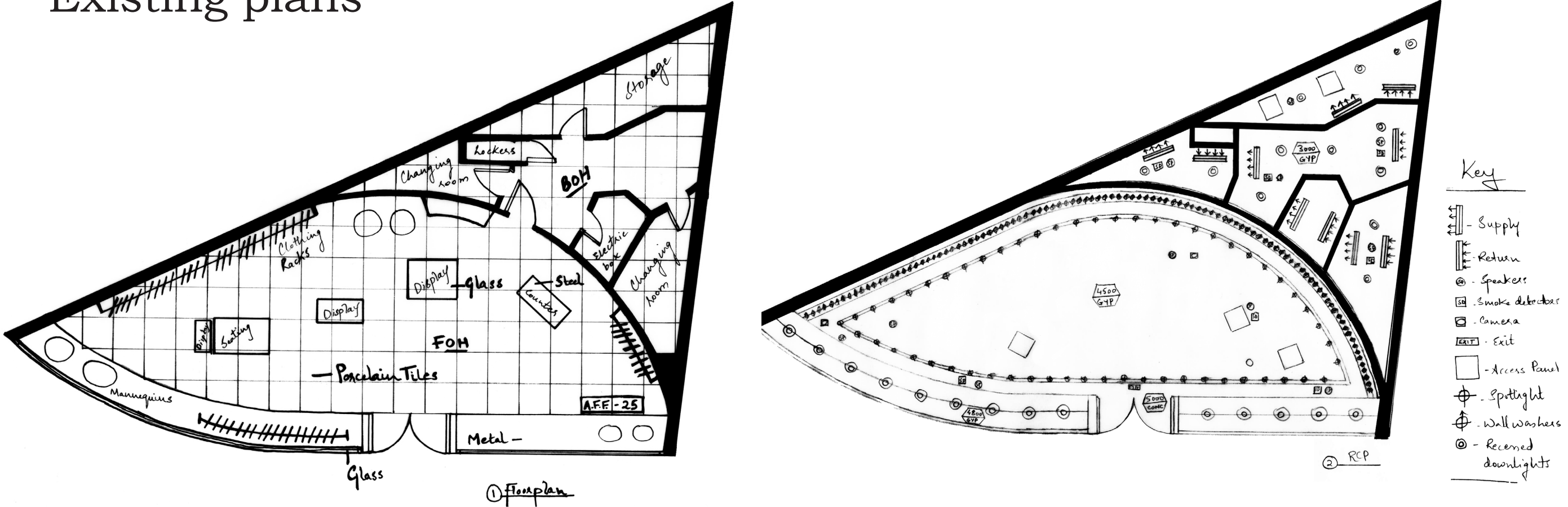


PLEATS PLEASE

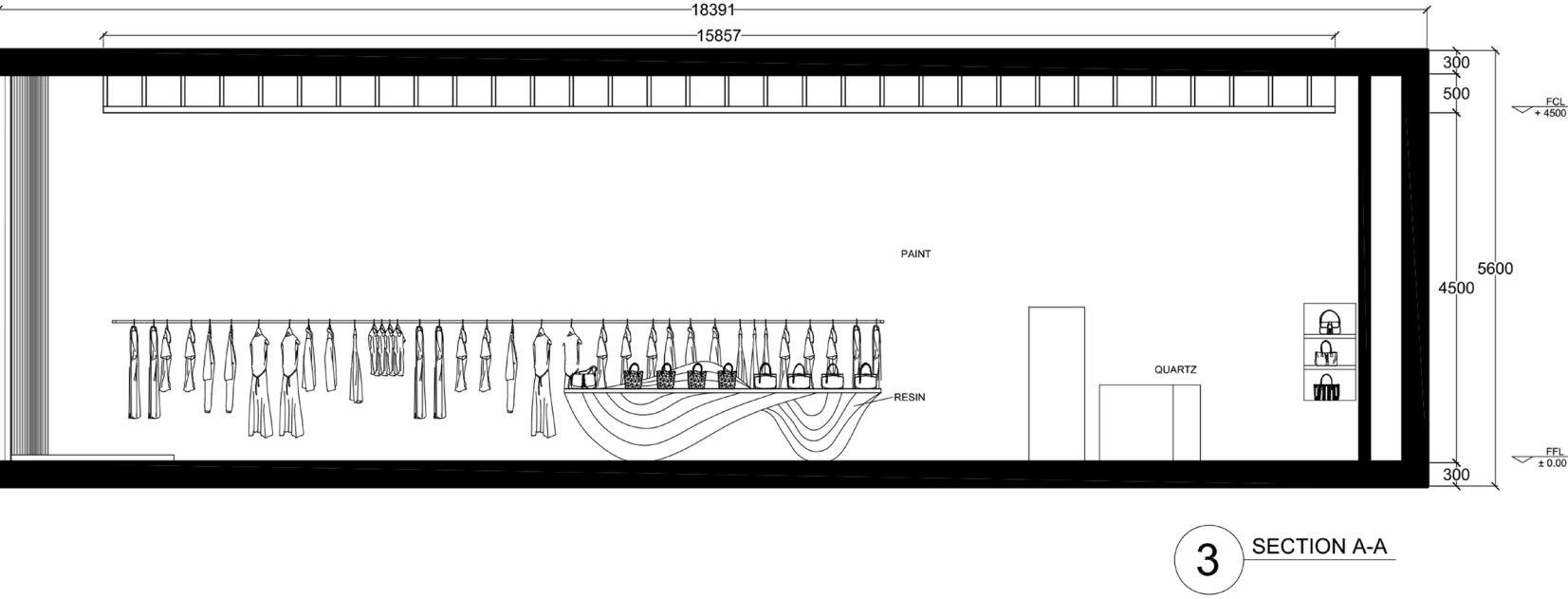
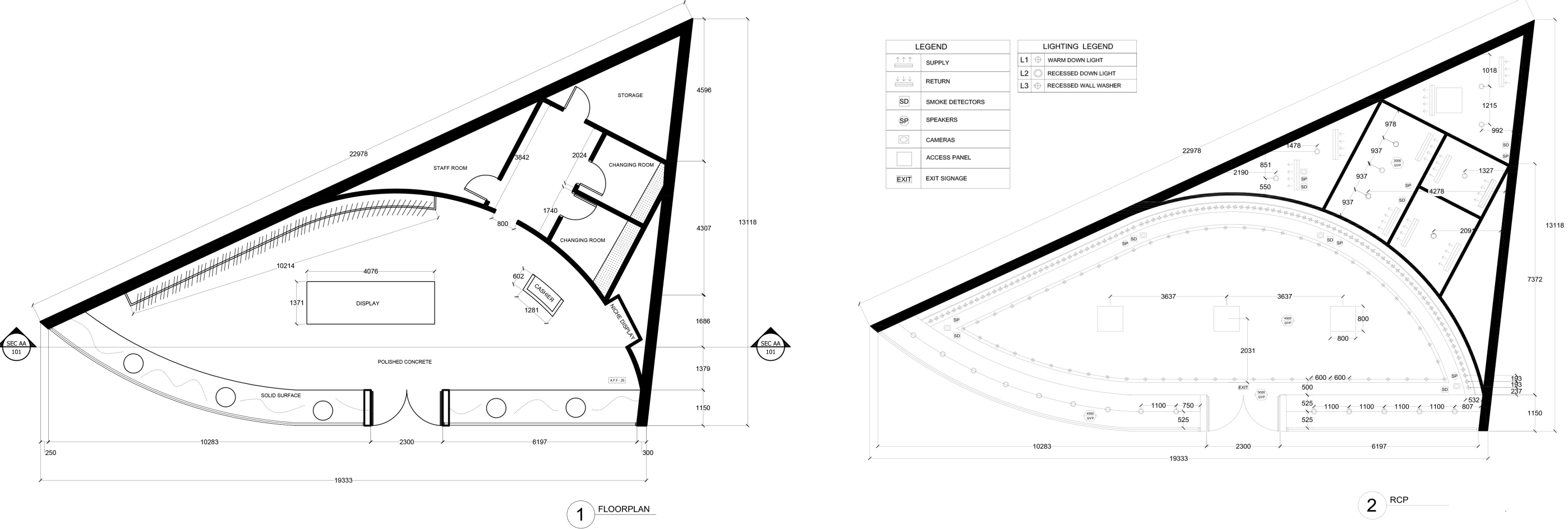
This is a retail project, where a fashion outlet was chosen, and redesigned in a subtle fashion. The mall outlet chosen was Pleats Please, and issues regarding the floor plan were modified to provide better circulation, a focal point, and appropriate lighting. The entrance and facade were also modified to appear as unique as the clothing.

Pleats Please, launched by ISSY MIYAKE, displayed a collection of clothes that were made with a unique "garment pleating" technique where the materials are developed from a single thread and pleats are added after sewing the clothes into shape. The outlet was redesigned keeping this concept in mind, resulting in minimalistic and linear elements. The focal point is inspired by one of his products, a whale made with the same technique, which is made into a display table.

Existing plans

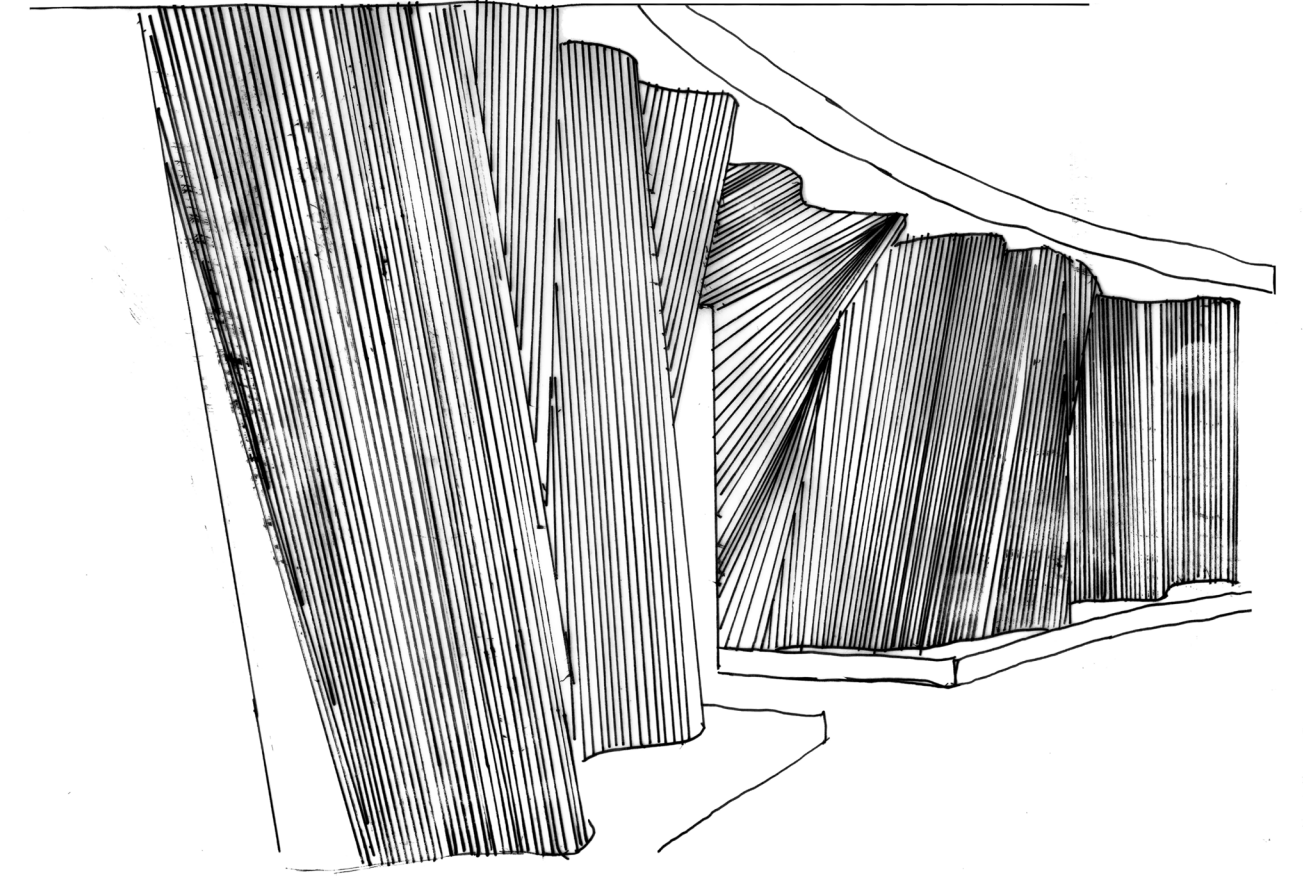
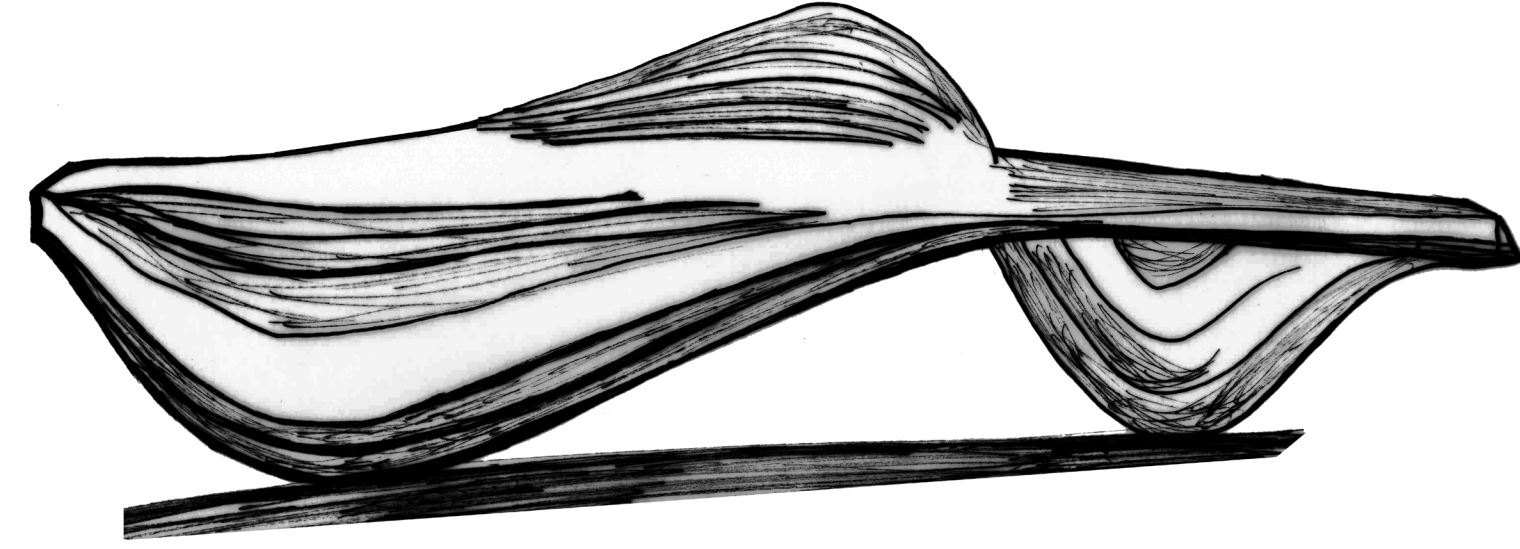
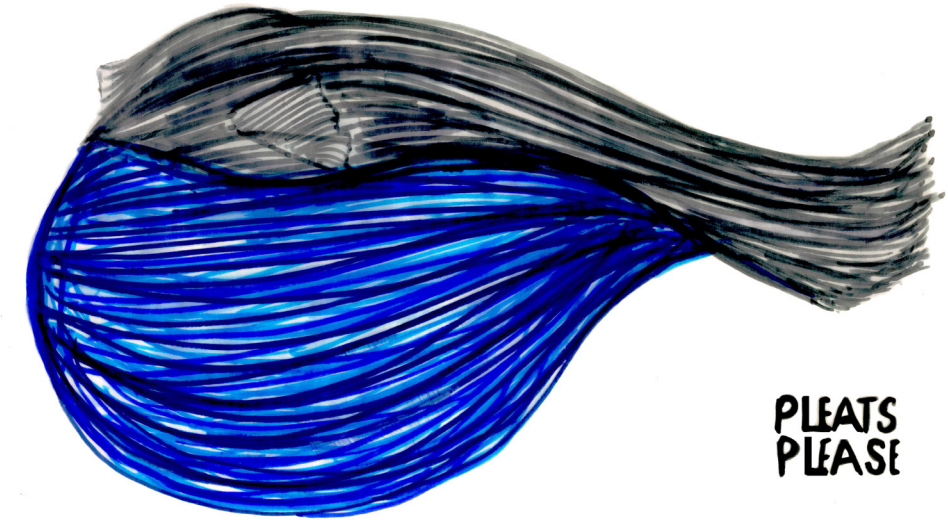


Proposed plans

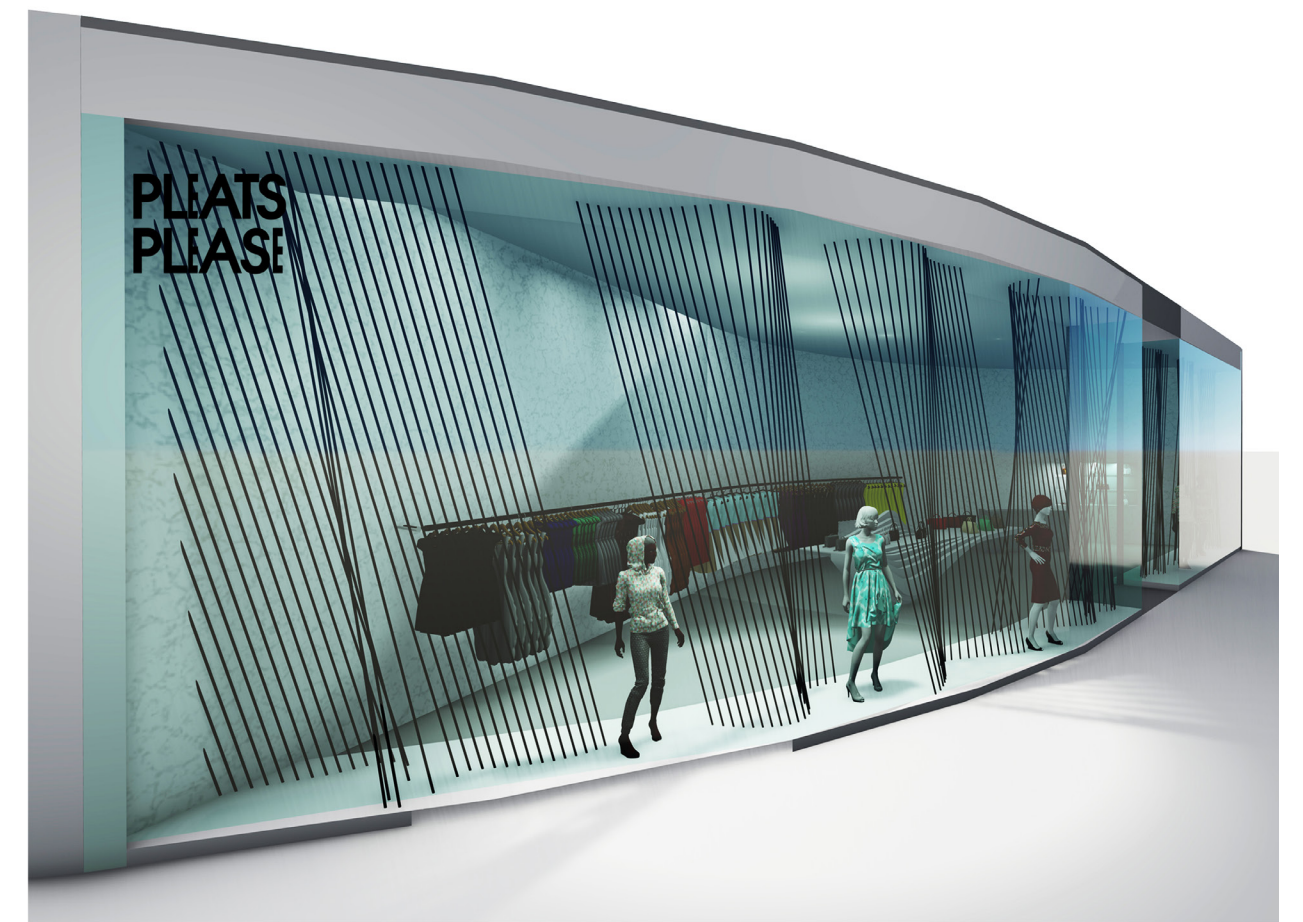
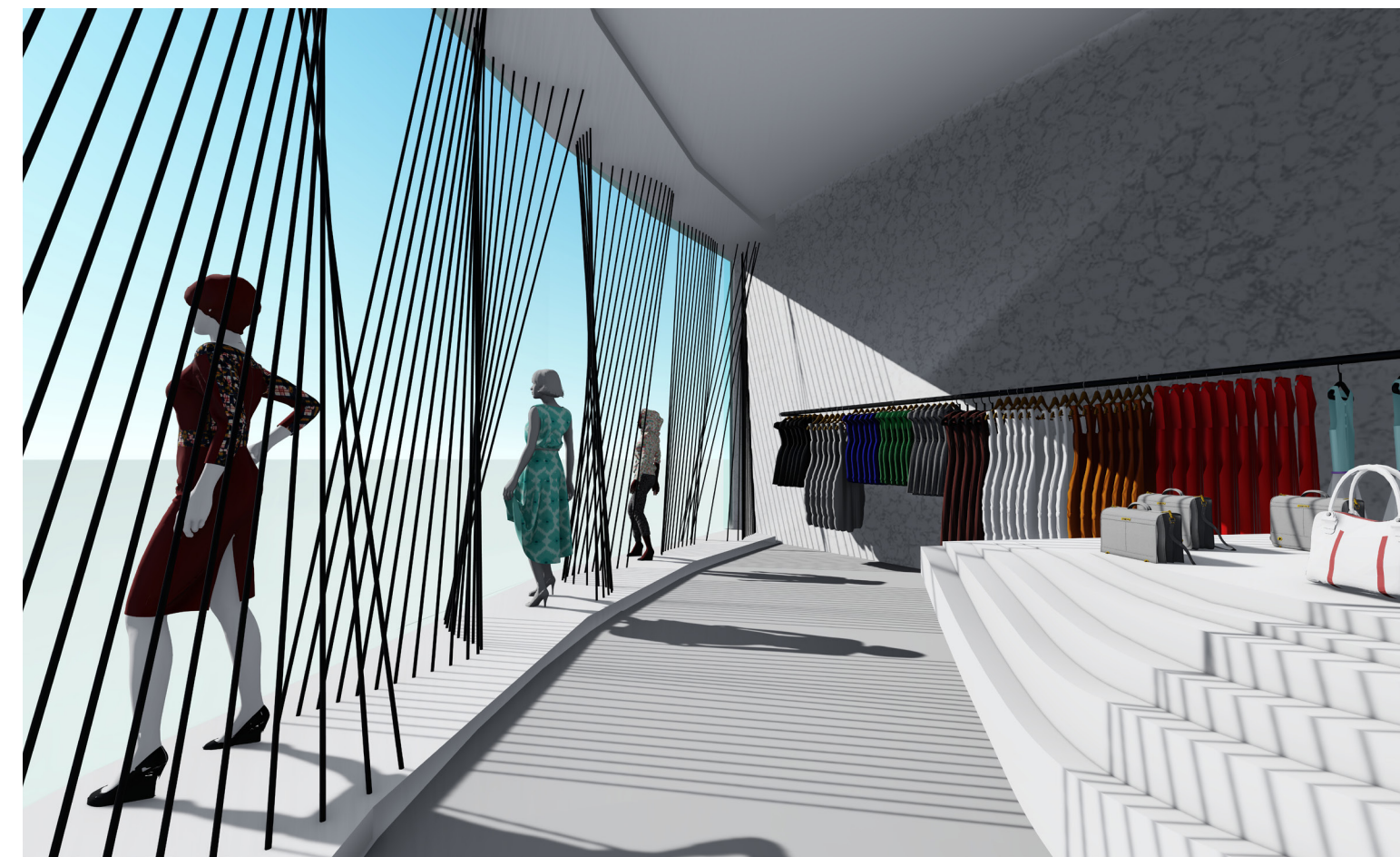
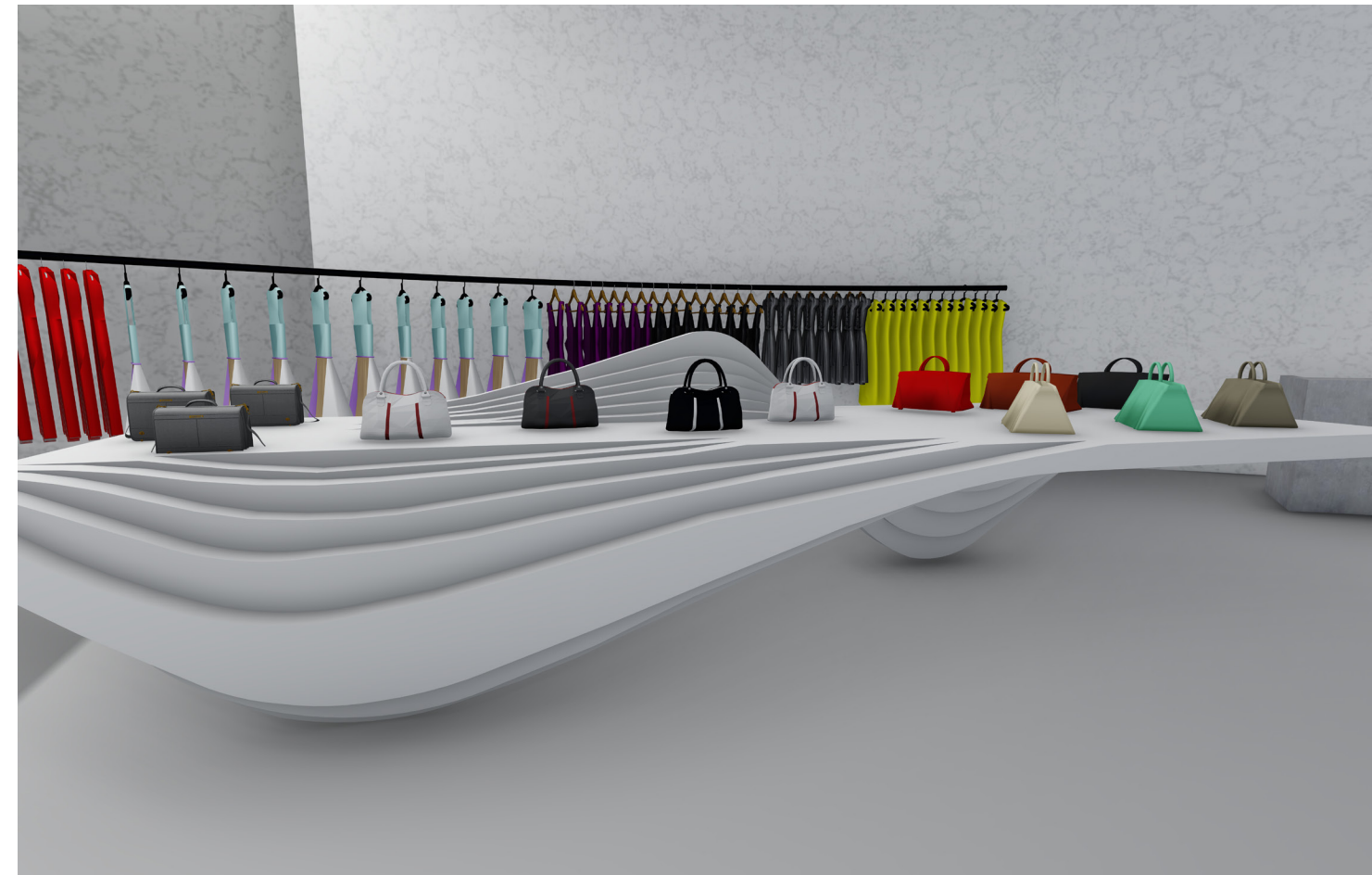


PLEATS PLEASE

Transformation sketches



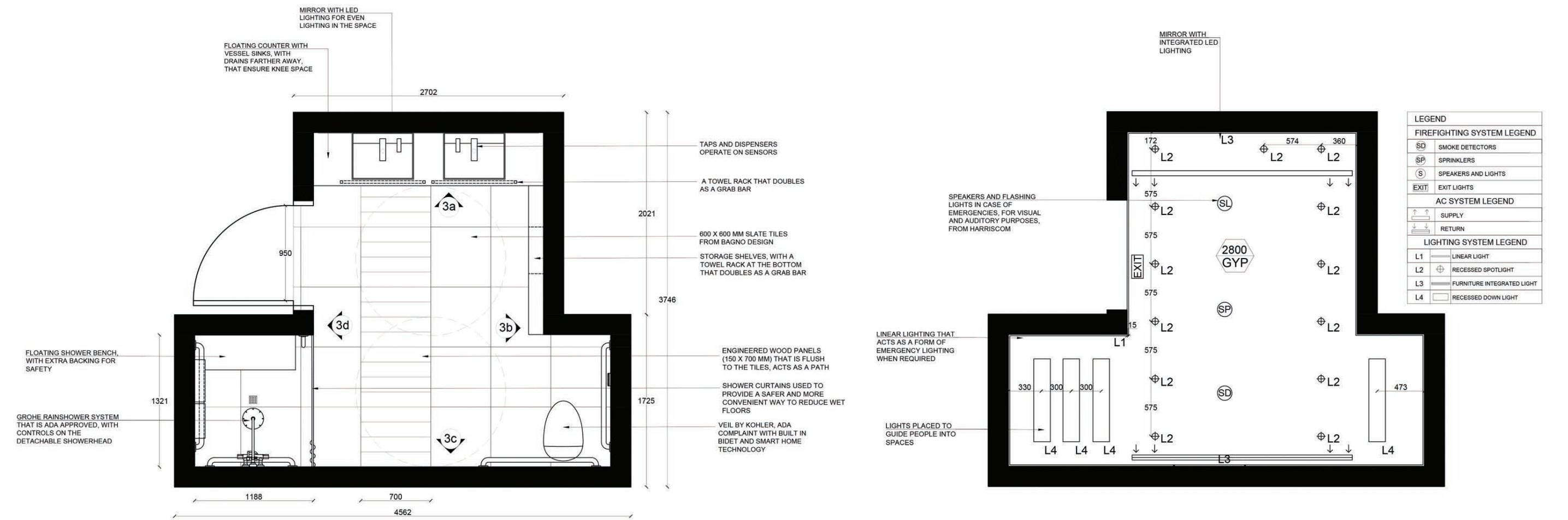
Renders



EMBER

This is a Universal design project, where a residential-style bathroom was designed, keeping all users in mind. The project uses high contrast materials, colors, and finishes to guide an individual in the space.

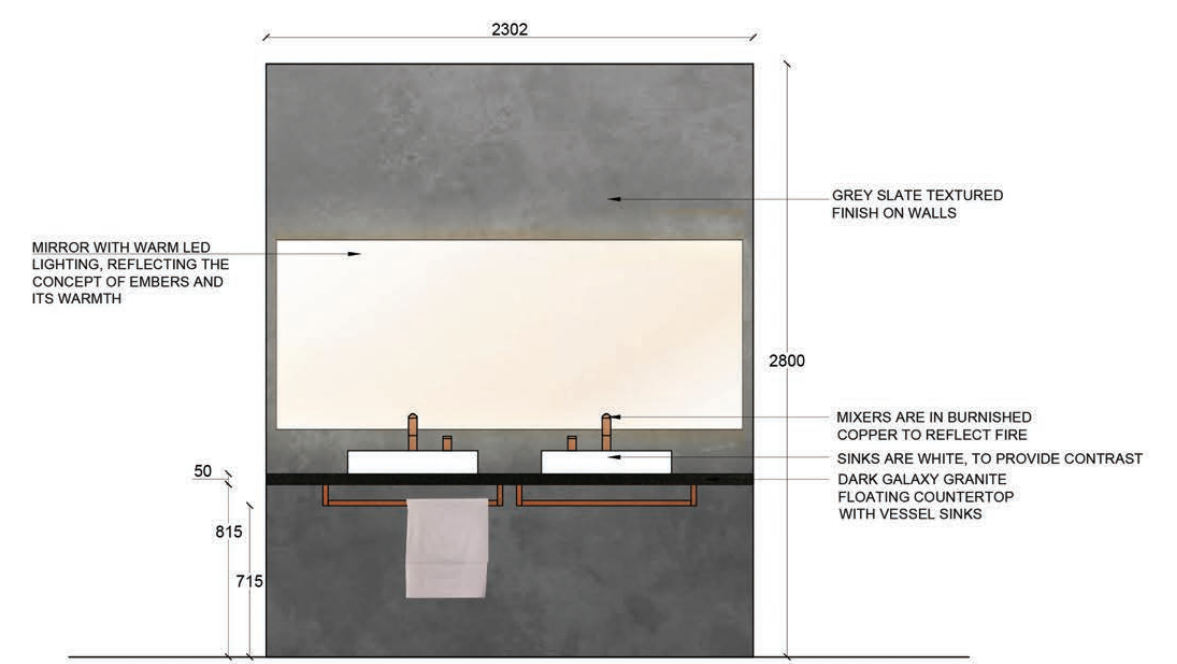
This bathroom concept was inspired from embers, making use of its copper colors, warmth and its idea of coziness to create a comfortable space.



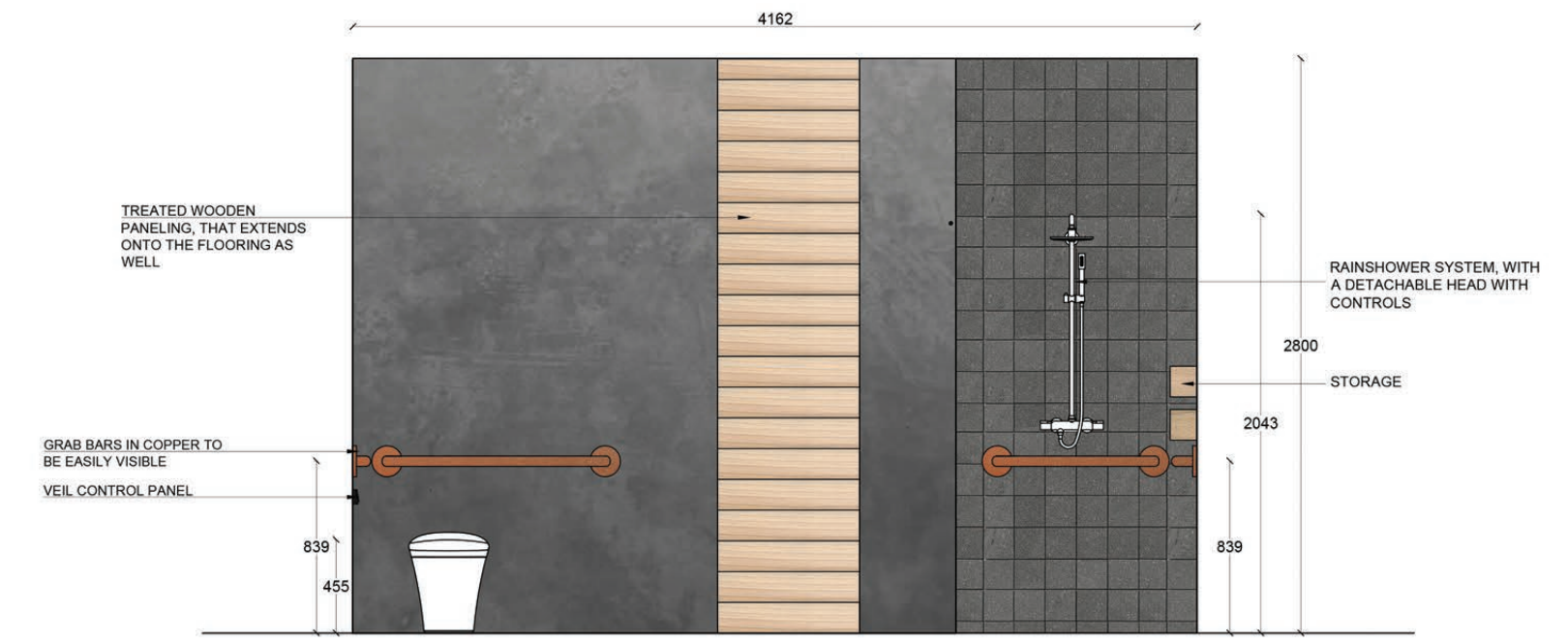
1 FLOOR PLAN

2 RCP

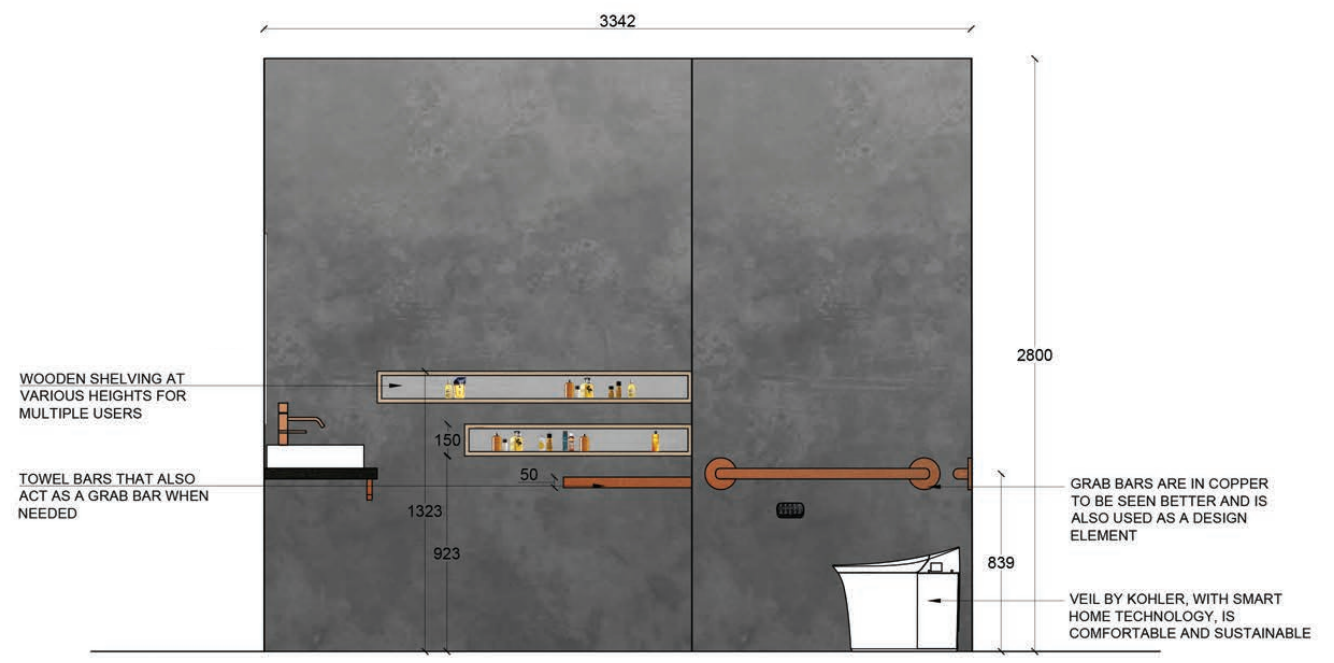
Rendered elevations



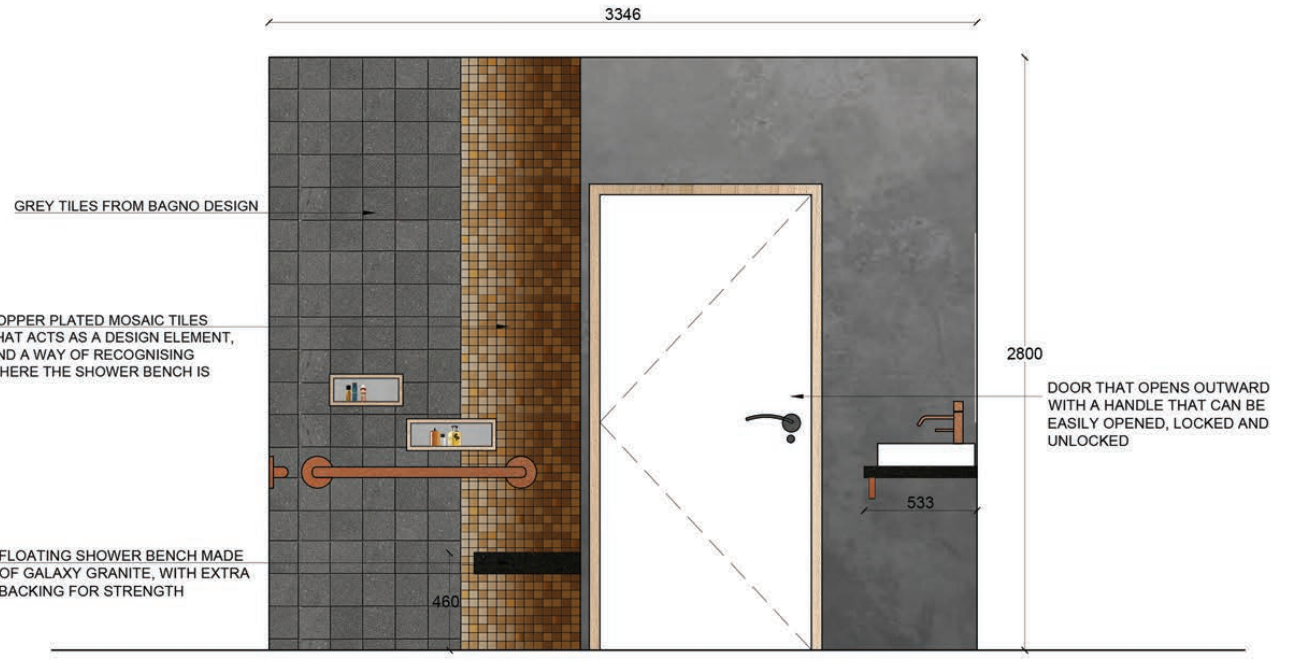
3a ELEVATION 1



3c ELEVATION 3



3b ELEVATION 2



3d ELEVATION 4



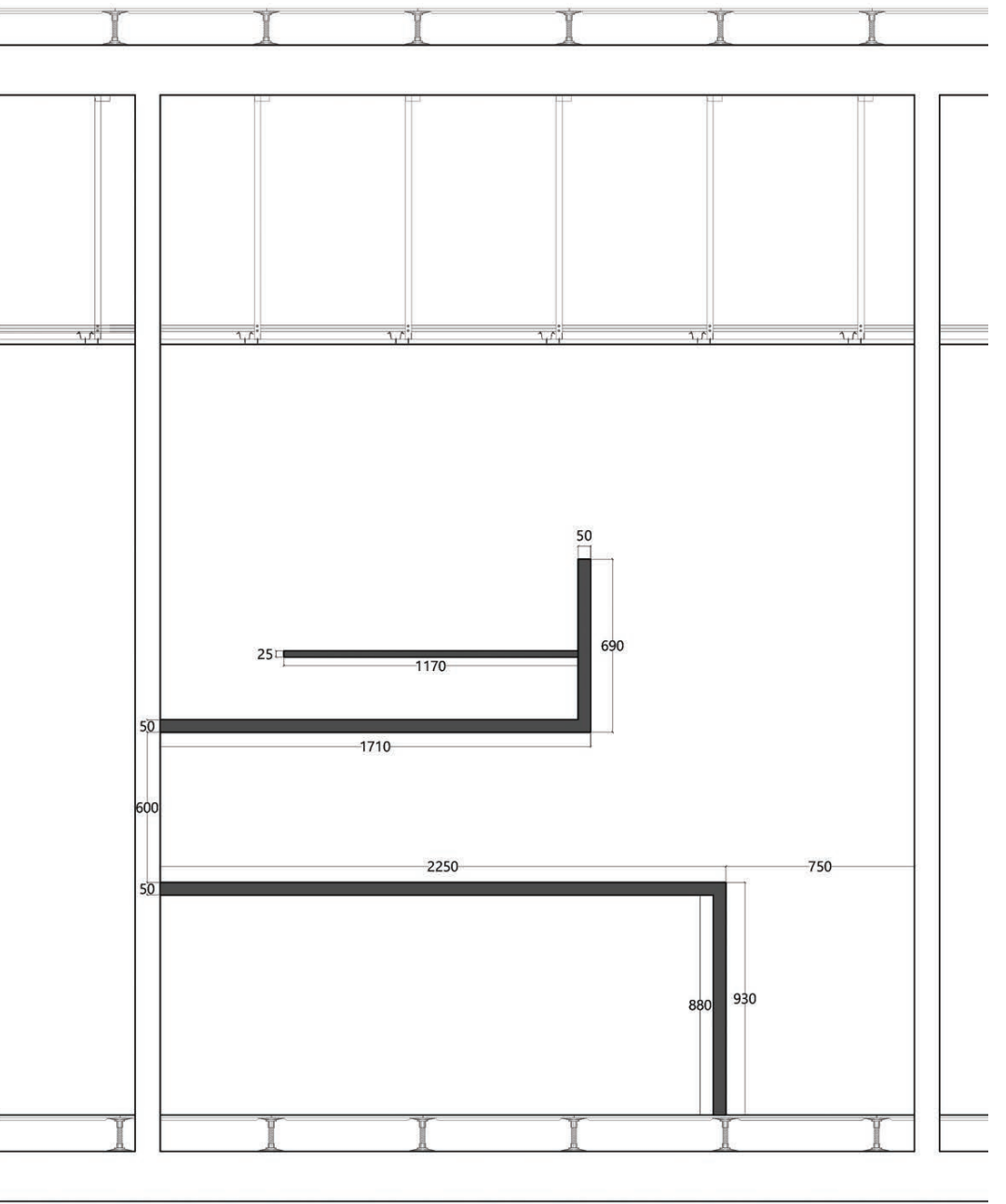
SIEMENS KITCHENETTE

This is an office pantry proposal designed for Siemens. As a part of a step-by-step renovation of one of their offices.

The space was petite, and required a functional pantry storage that looked visually appealing as well.

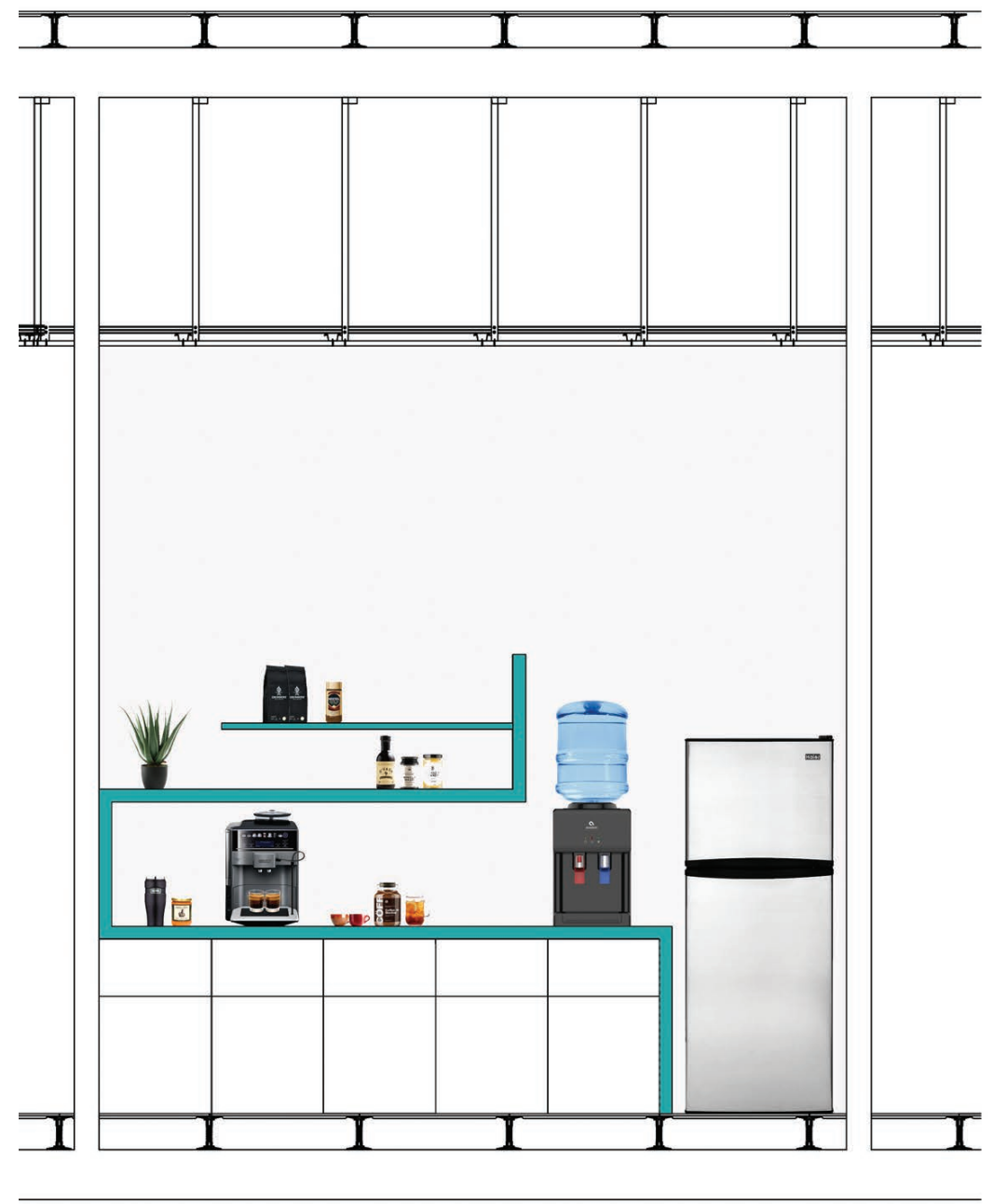
The colors are simple whites and greys, with a teal that represent Siemens, to act as a pop of color that draws your eyes towards the shelving unit. These colors ensure that the piece harmonizes with the rest of the office space.

Elevation



1 FRONT VIEW

Rendered Elevation



2 FRONT VIEW RENDER

Renderers





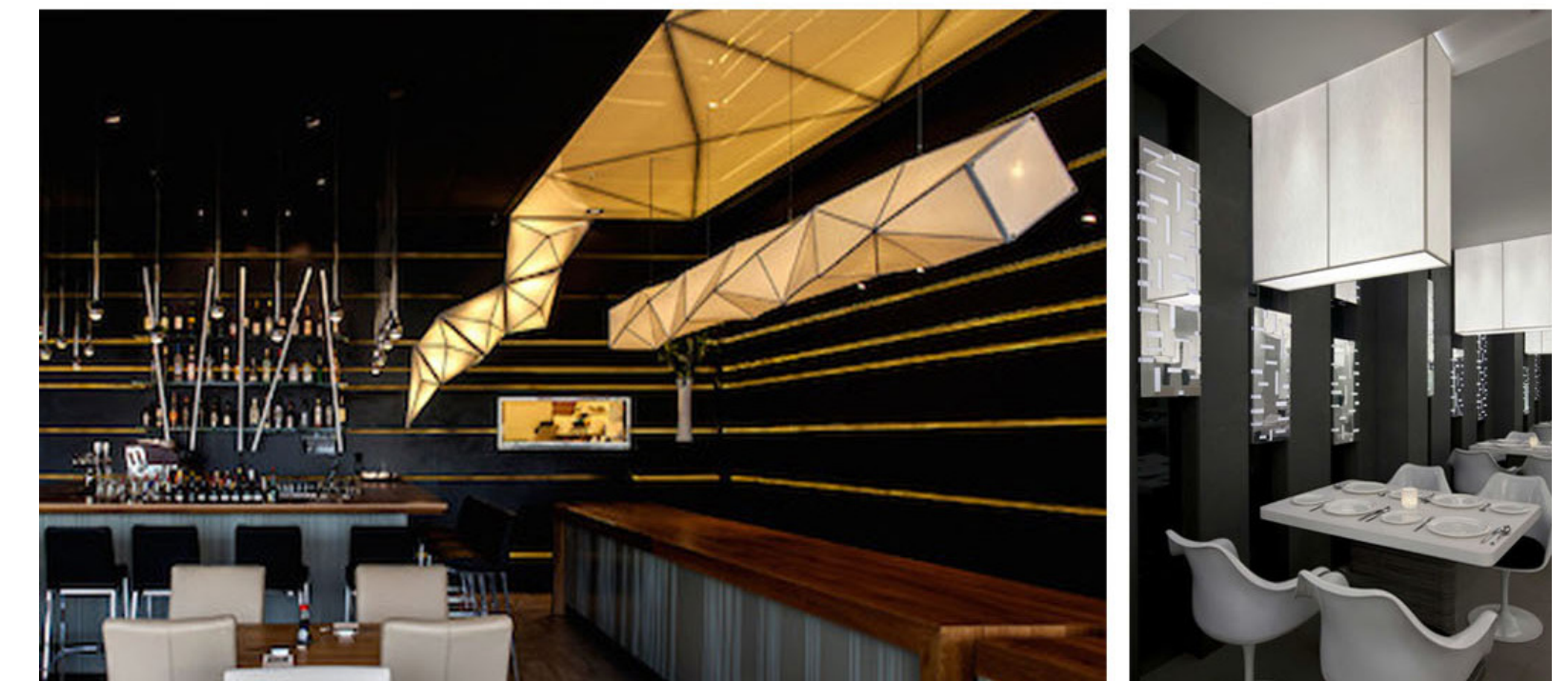
MIKUSSU

This is a Food and Beverage project, where a fusion restaurant was designed, taking inspiration from the Japanese art of origami.

The origami crane, in particular is used, in a deconstructed format, and is also the inspiration behind the ceiling. The ceiling has LED blocks that drop down at various heights, in an abstracted shape of the crane. This acts as the ambience lighting for the space.

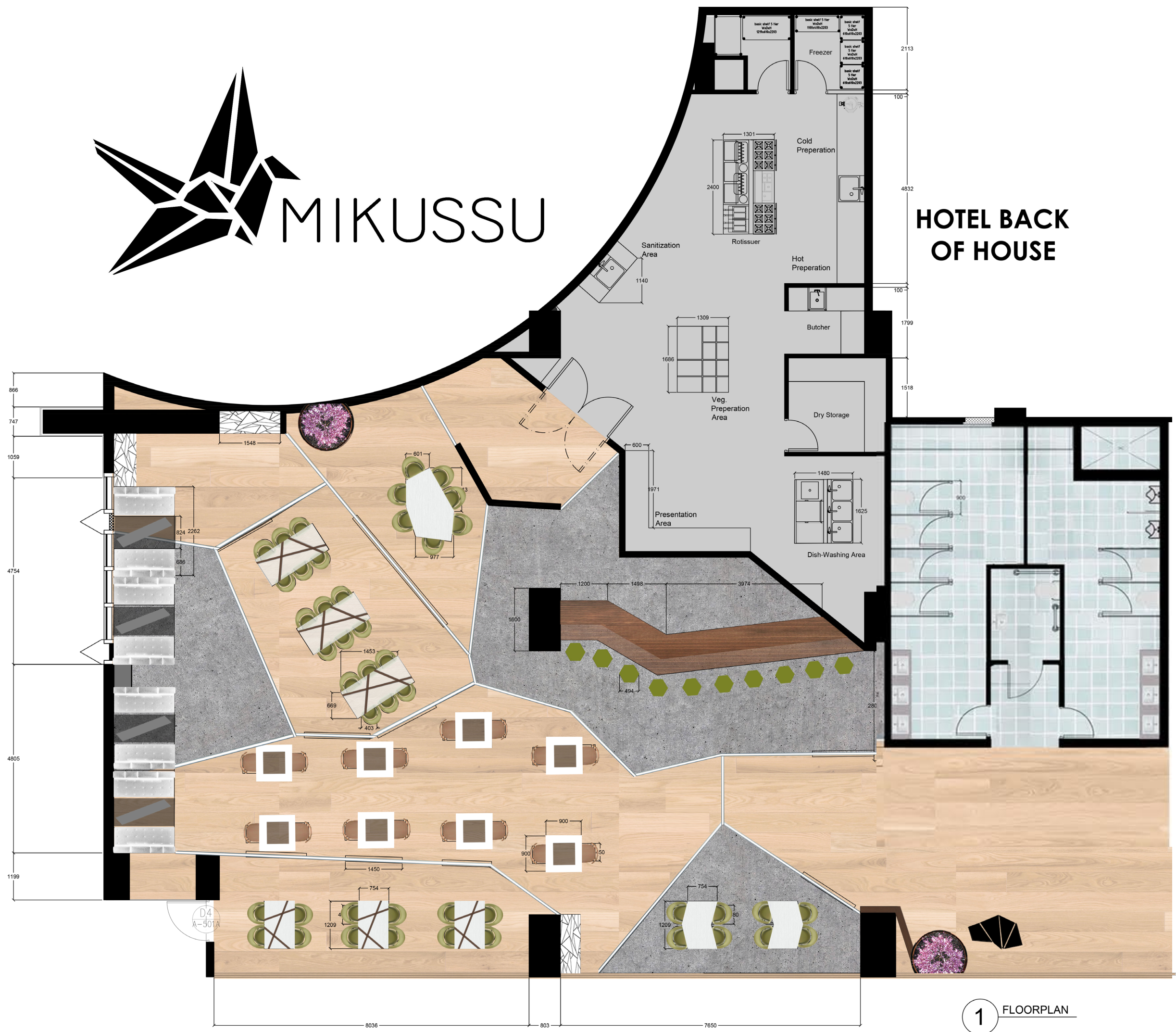
The materials used is wood, metal, glass, and stone, to create a space that uses natural tones and creates a relaxing atmosphere, while contrasting with the rigid shapes and forms in the space.

The colors are predominantly matcha green, greys, and white. These tones are used to reflect Japan, and to give a minimalistic, and elegant feel to the restaurant.





HOTEL BACK OF HOUSE



1 FLOORPLAN





LAND OF SETTLERS

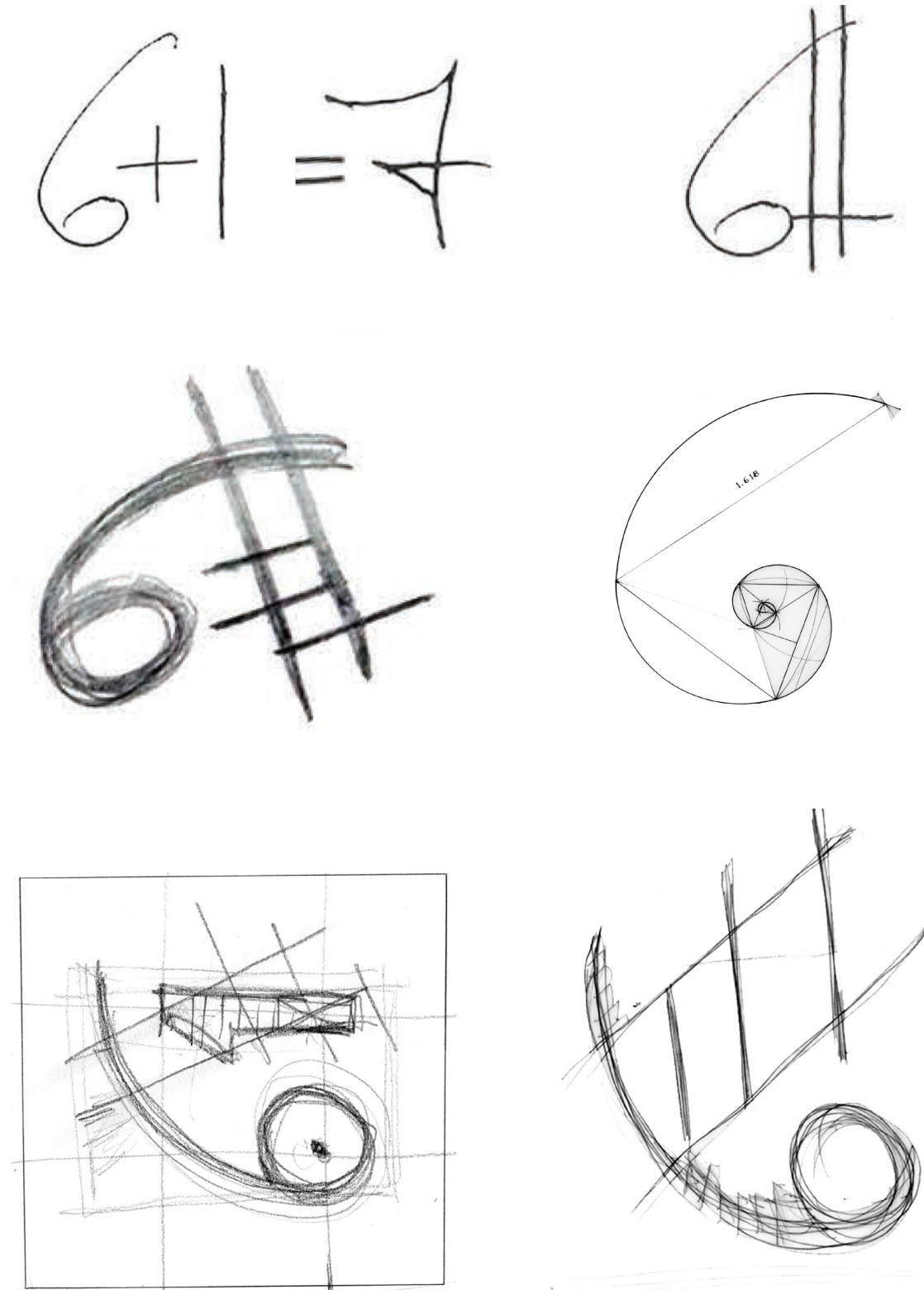
This project was done by taking inspiration from the town of Christiana, Copenhagen in Denmark. A client was chosen from the town, and a wall unit was designed for the individual.

The design inspiration was to create an abstract composition that acts as a tribute to his family. The wall unit is an abstraction of $6 + 1 = 7$, where 61 was his father's age when he passed, and the song used as a starting point, is titled "7 years" as well.

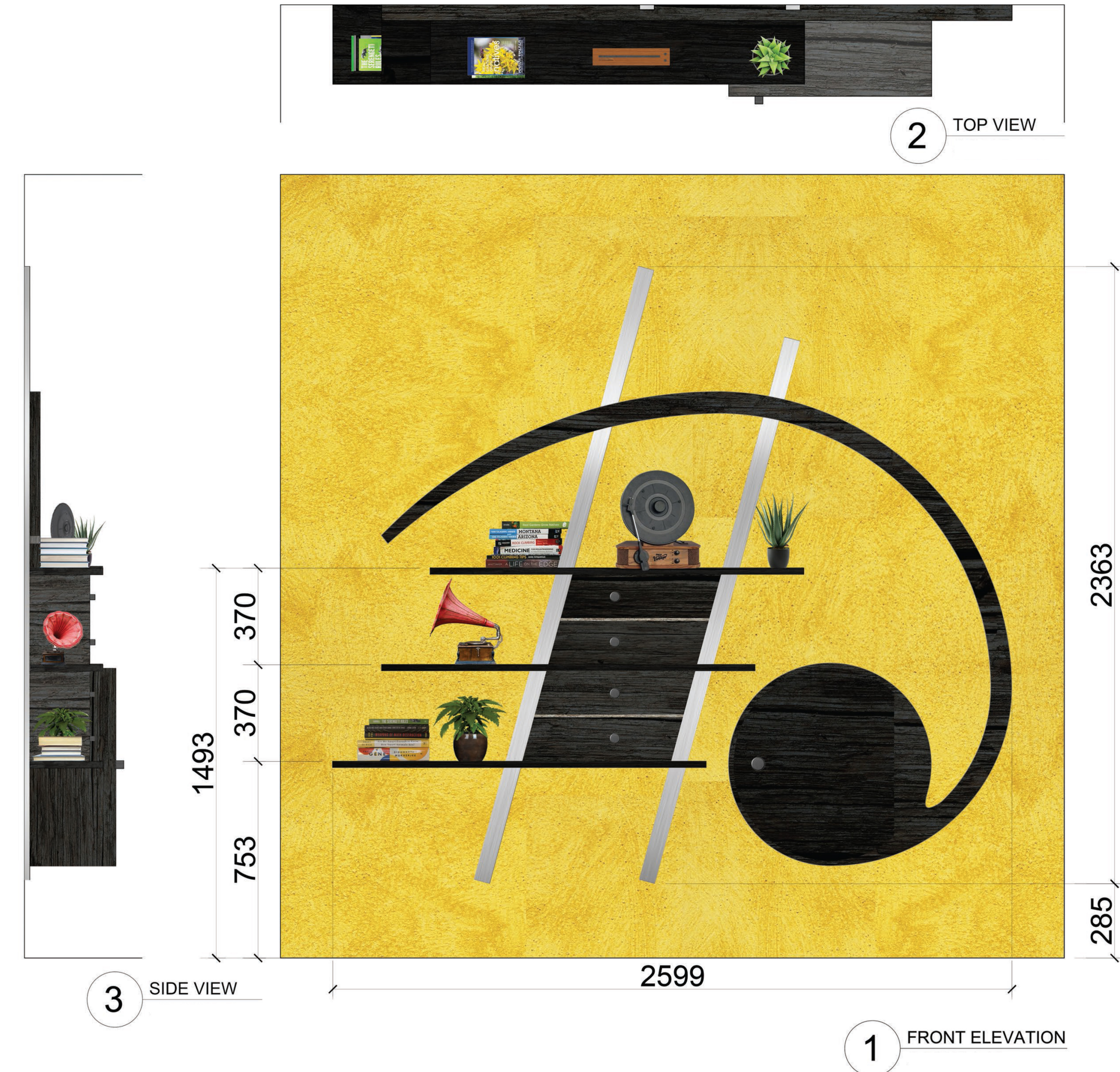
This furniture piece was designed for Lukas Graham Forchhammer. He is the lead vocalist for the Danish band Lukas Graham. He became famous after his song "7 Years". In this song, he candidly summarizes his life, his losses and his future hopes and dreams.

The materials used for this piece were reclaimed black Beech wood, along with chrome metal for the cabinet and drawer hardware.

Sketches



26



ABENDROT

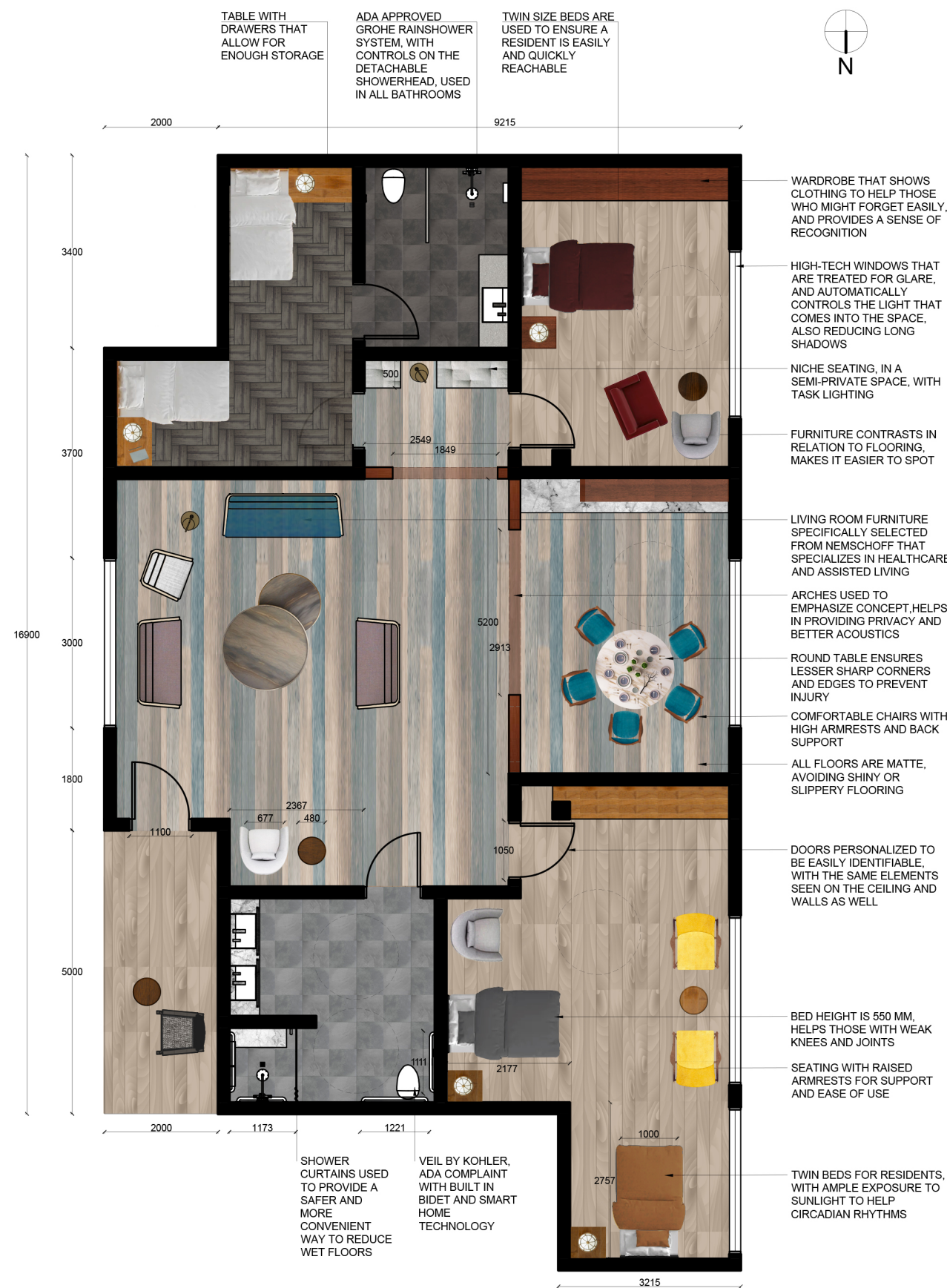
This is a residence for elderly, designed with Dementia patients in mind, with adherence to Universal design standards.

The concept of this space revolves around sunsets, and abendrot, i.e. the colors of the sky when the sun is setting. The color scheme of the apartment reflects different colors accordingly. The space uses reds, yellows, and brown, with rich blues to act as a contrast, while also hinting at the sky.

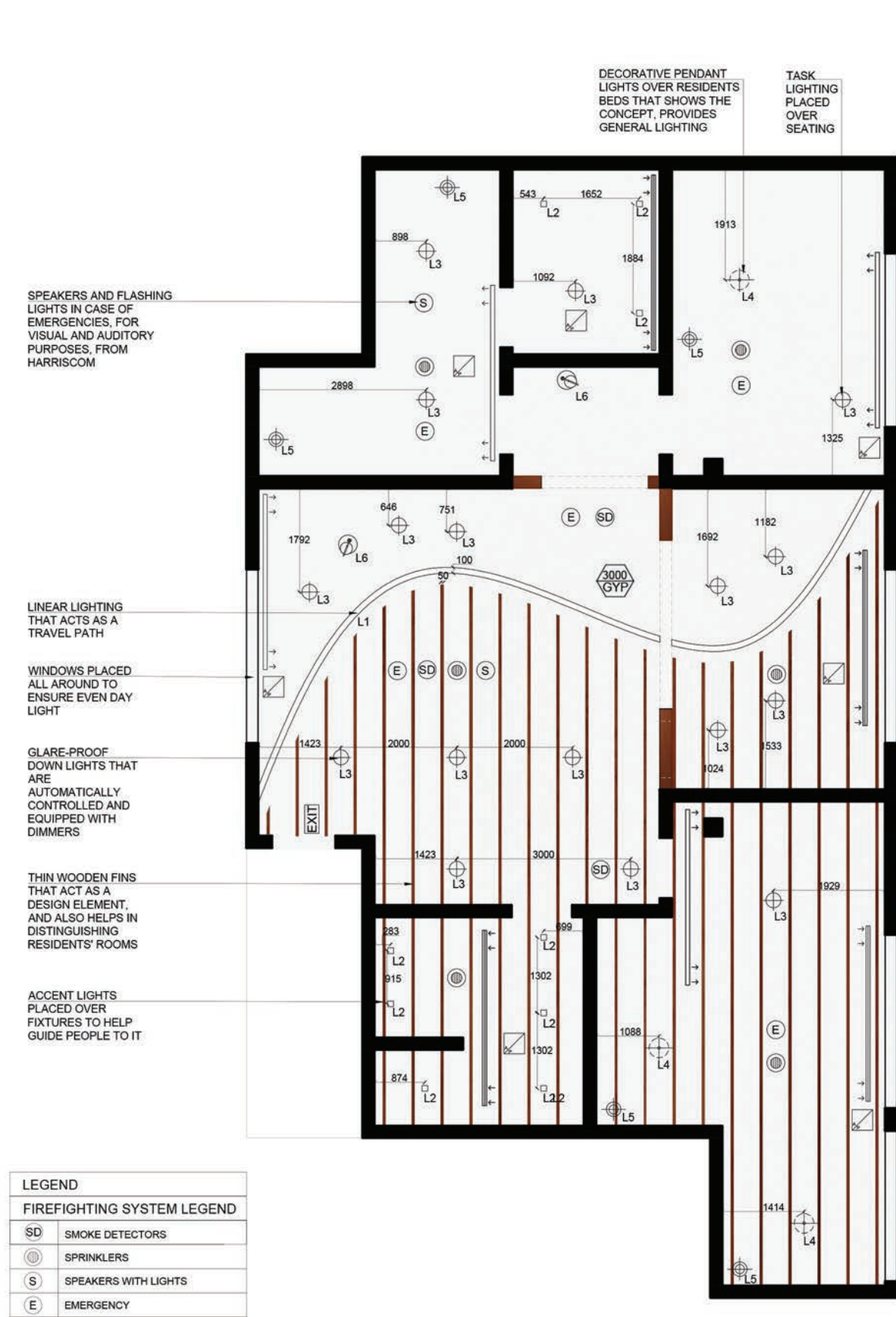
Such a color scheme also ensures easier differentiation by residents. The ceiling also adds to this, and is an abstracted version of rays, to tie in the concept more. Arches at entrances also serve these features.

The space is designed to be aesthetically appealing, while also practical and comfortable.

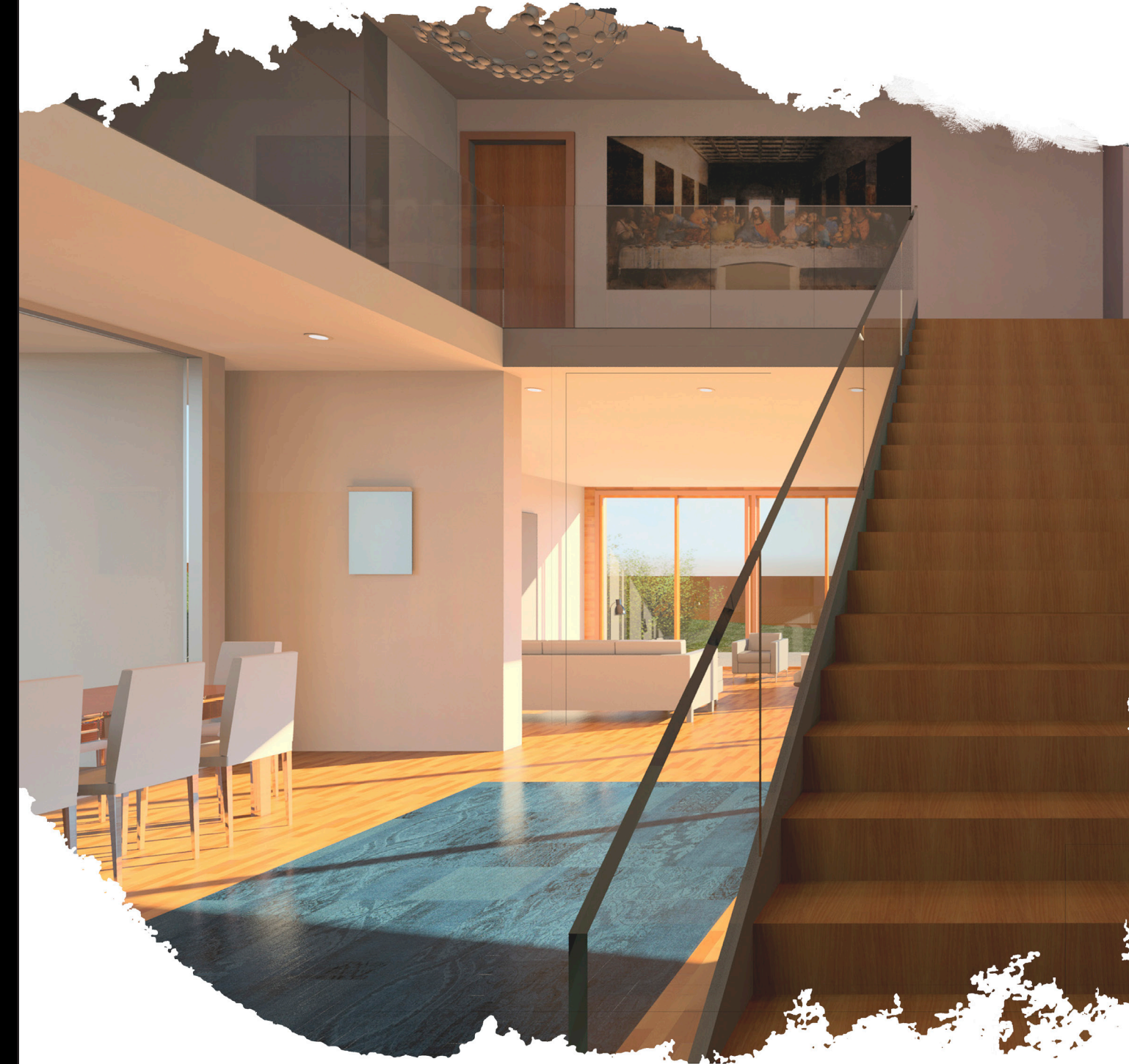
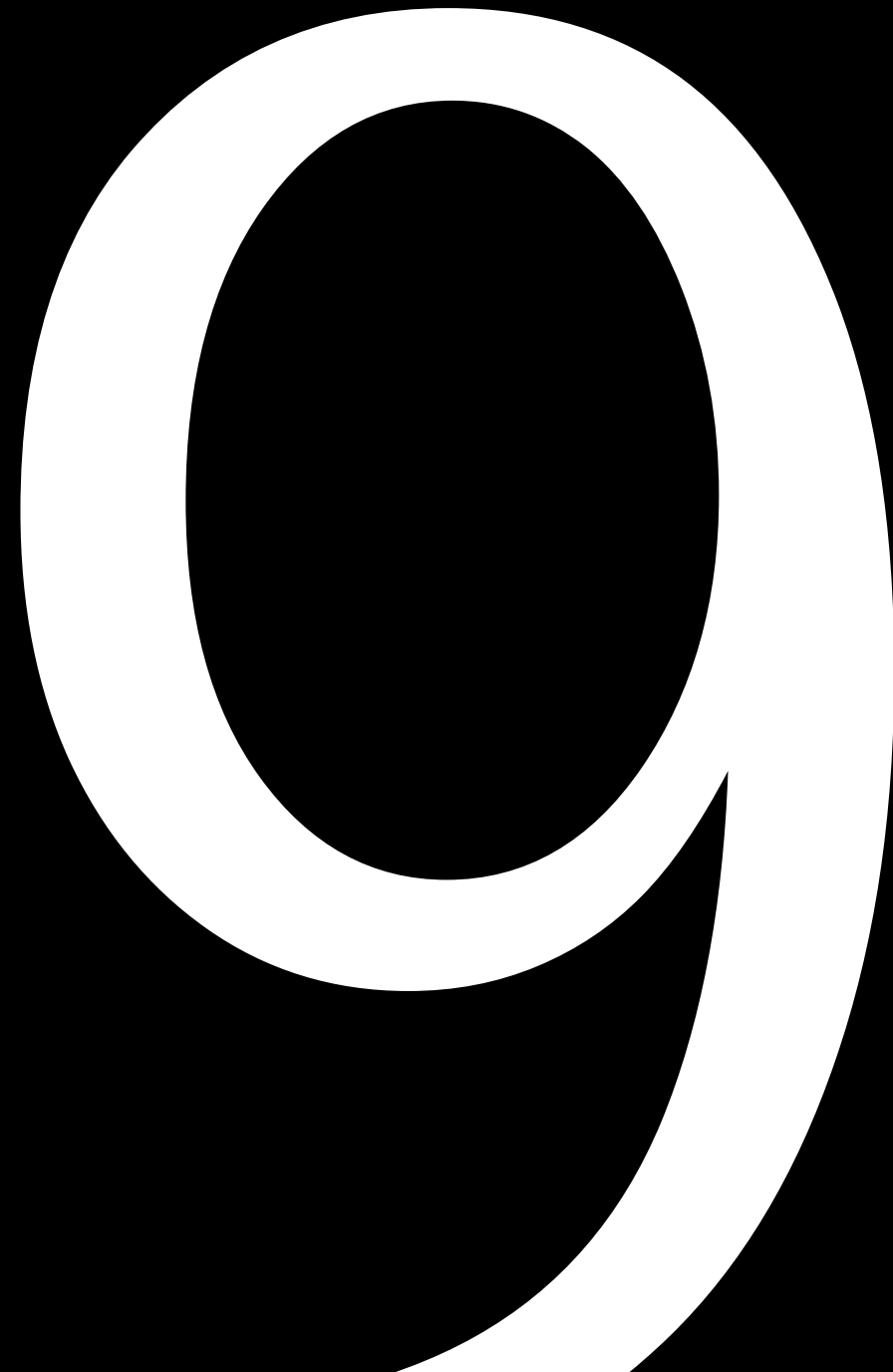




1 FLOOR PLAN



2 RCP



HOUSE N

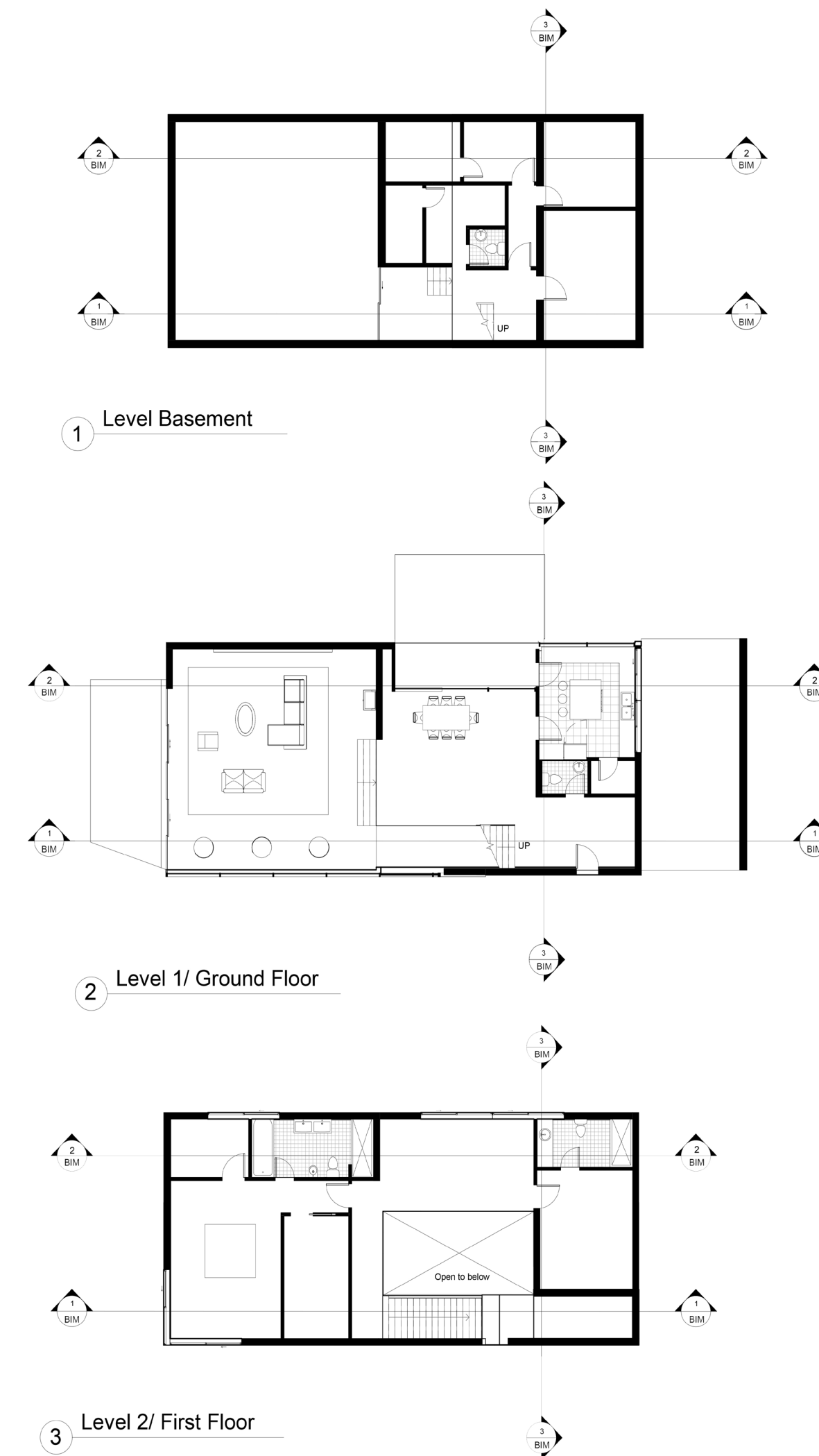
Project Overview -

Project: House N
Location: Zagreb, Croatia
Architect: 3LHD
Size: 480 sq m
Floors: 3
Year: 2008

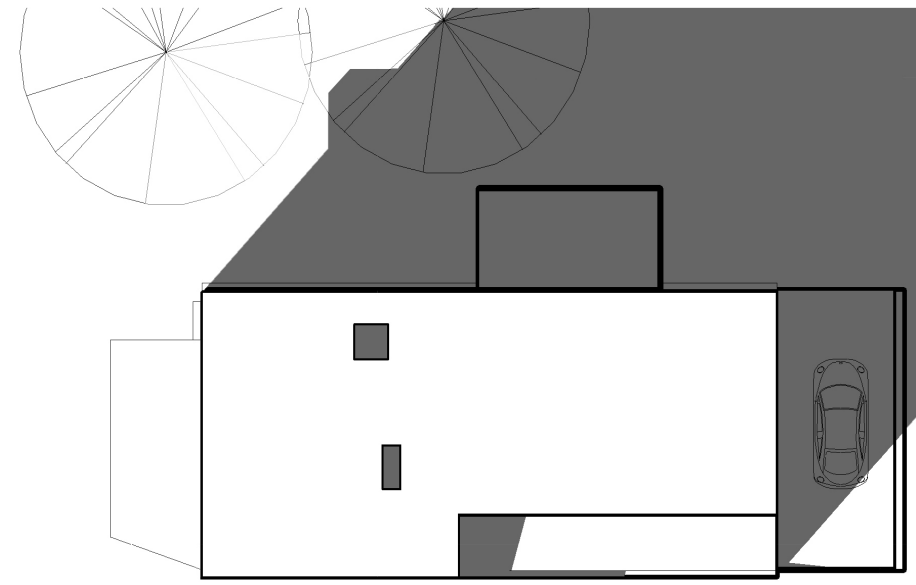
This project is a modern house replicated on a building information modeling software (BIM), called Revit.

House N is a residence situated in the quiet neighborhoods of Pantovčak, one of Zagreb's most prestigious streets. The building is simple on the exterior, and is styled with a modern flair.

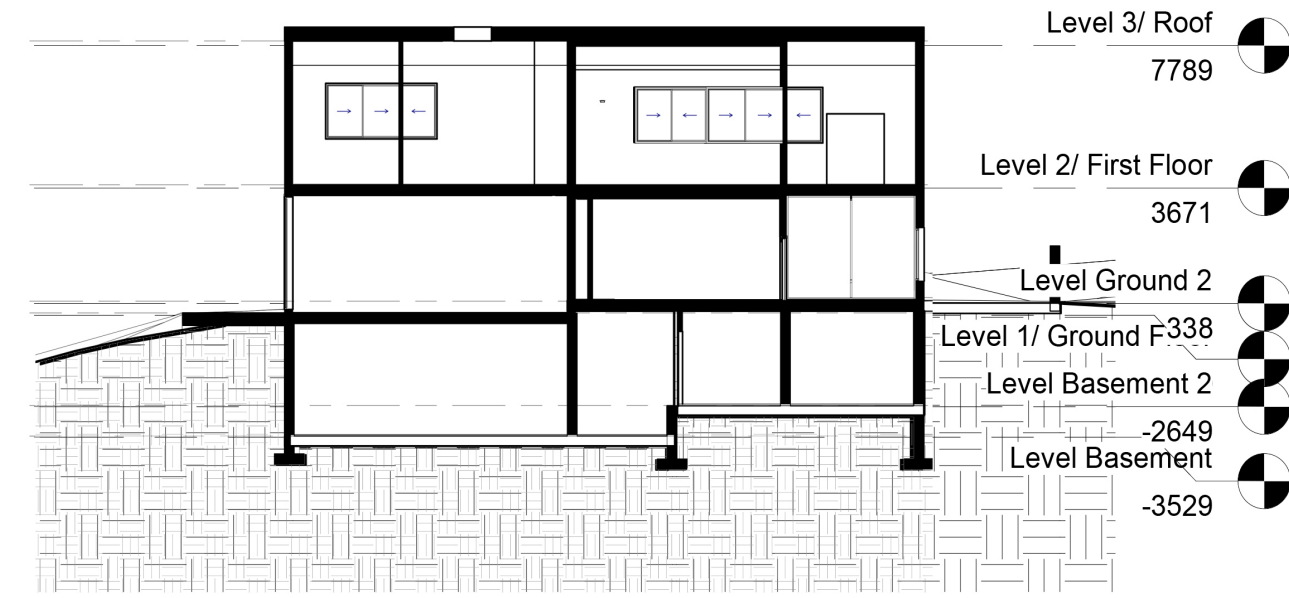
The building is placed on a hill, resulting in steep topography, requiring thick retaining walls at the sides. However, the view from the house is exquisite due to the location. Lots of glass has been used for this reason, and a good amount of natural light enters the space because of this.



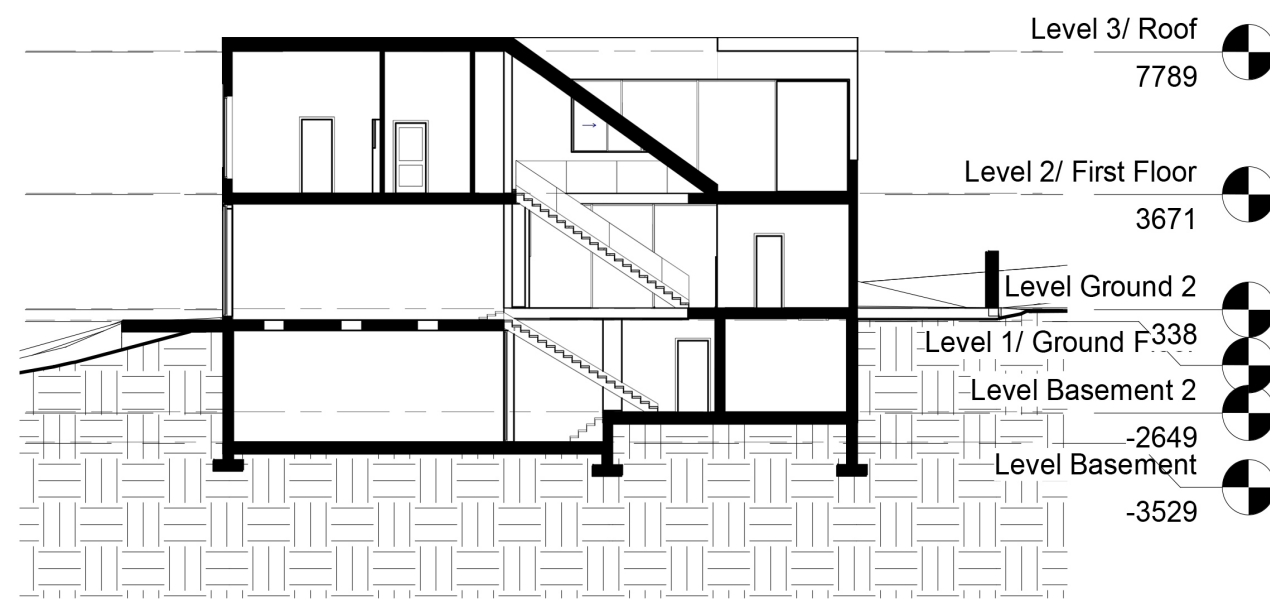
Site plan and Sections



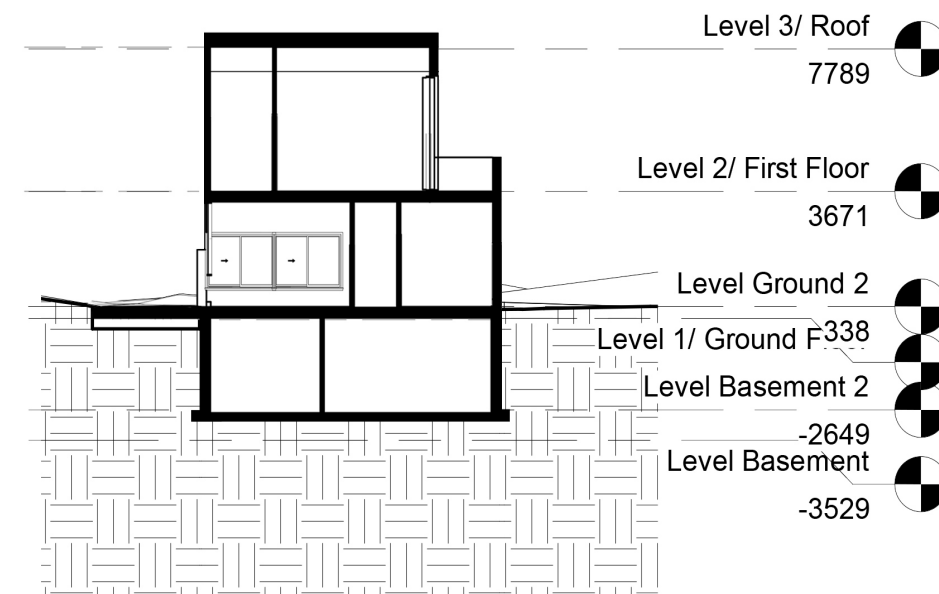
1 Site plan



2 Section 2-2



1 Section 1-1



3 Section 3-3

